

WAAS CH 86512 W06A	APP CRS 060°	Rwy Idg TDZE Apt Elev	5702 604 609
--	------------------------	-----------------------------	---

RNAV (GPS) RWY 6

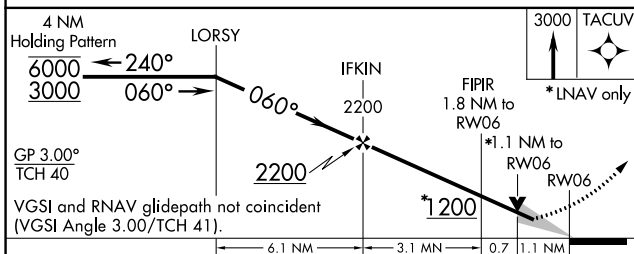
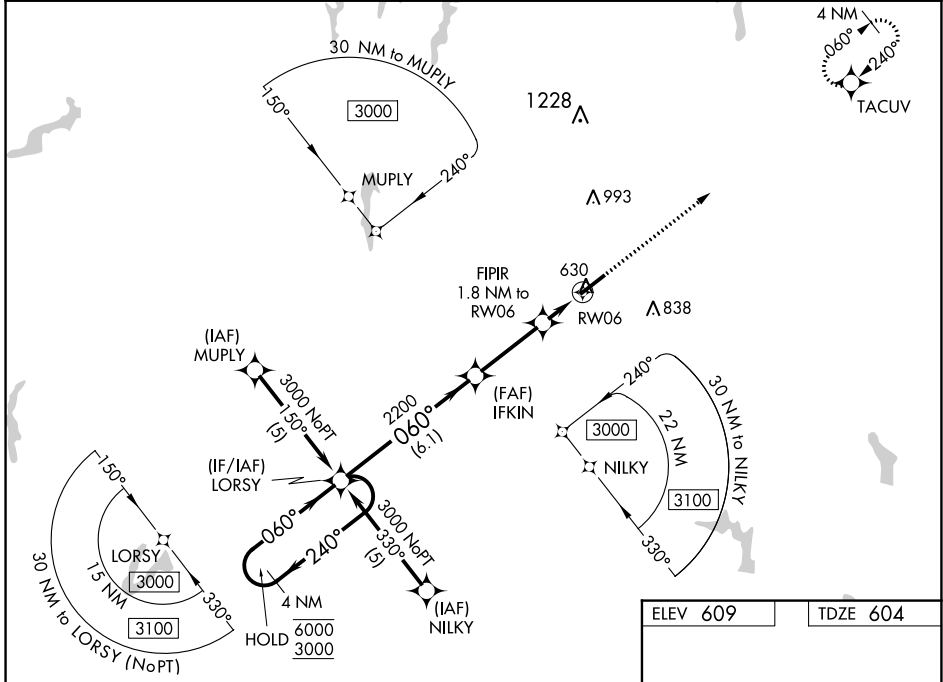
RALEIGH RGNL AT PERSON COUNTY (TDF)

RNP APCH

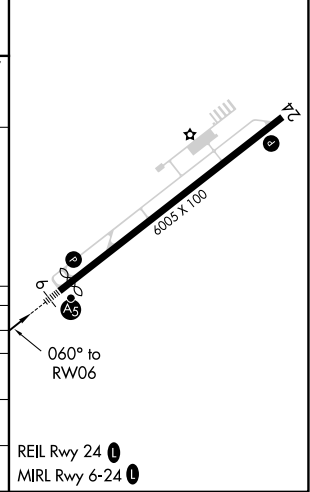
Baro-VNAV and VDP NA when using Danville altimeter setting. For uncompensated Baro-VNAV systems, LNAV/VNAV NA below -16°C or above 54°C. When local altimeter setting not received, use Danville altimeter setting; increase LPV DA to 916 and LNAV/VNAV DA to 1150; increase all MDAs 80 feet and increase LNAV Cat C visibility 7/8 SM and Circling Cats C/D visibility 1/4 SM. For inop ALS, increase LNAV/VNAV all Cats visibility to 1 3/8 SM and LNAV Cat C visibility to 1 SM. For inop ALS, when using Danville altimeter setting, increase LPV all Cats visibility to 7/8 SM, LNAV/VNAV all Cats visibility to 1 3/8 SM, and LNAV Cat D visibility to 1 3/8 SM.

MALSR MISSED APPROACH: Climb to 3000 direct TACUV and hold.

AWOS-3 126.725	RALEIGH APP CON 132.35 256.9	GCO 119.7	UNICOM 122.7 (CTAF)
--------------------------	--	---------------------	-------------------------------



ELEV 609	TDZE 604
----------	----------



CATEGORY	A	B	C	D
LPV DA		854-1/2	250 (300-1/2)	
LNAV/VNAV DA		1090-1 1/4	486 (500-1 1/4)	
LNAV MDA	980-1/2	376 (400-1/2)	980-5/8 376 (400-5/8)	980-1 376 (400-1)
CIRCLING	1080-1	471 (500-1)	1300-2 691 (700-2)	1300-2 1/4 691 (700-2 1/4)

SE-2, 23 FEB 2023 to 23 MAR 2023

SE-2, 23 FEB 2023 to 23 MAR 2023