

LOC I-AEG 110.1	APP CRS 215°	Rwy Idg TDZE Apt Elev	7398 5817 5837
---------------------------	------------------------	-----------------------------	---

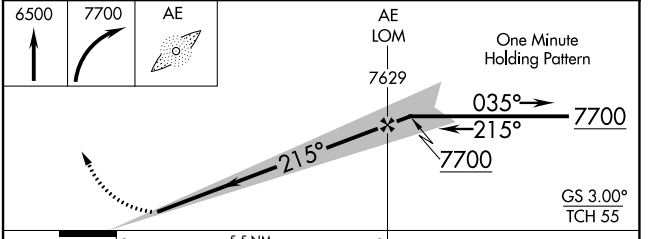
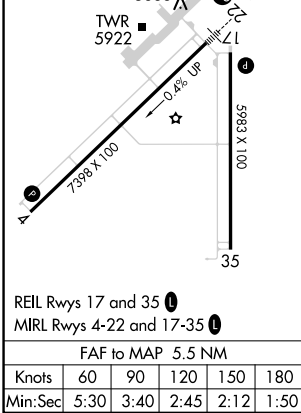
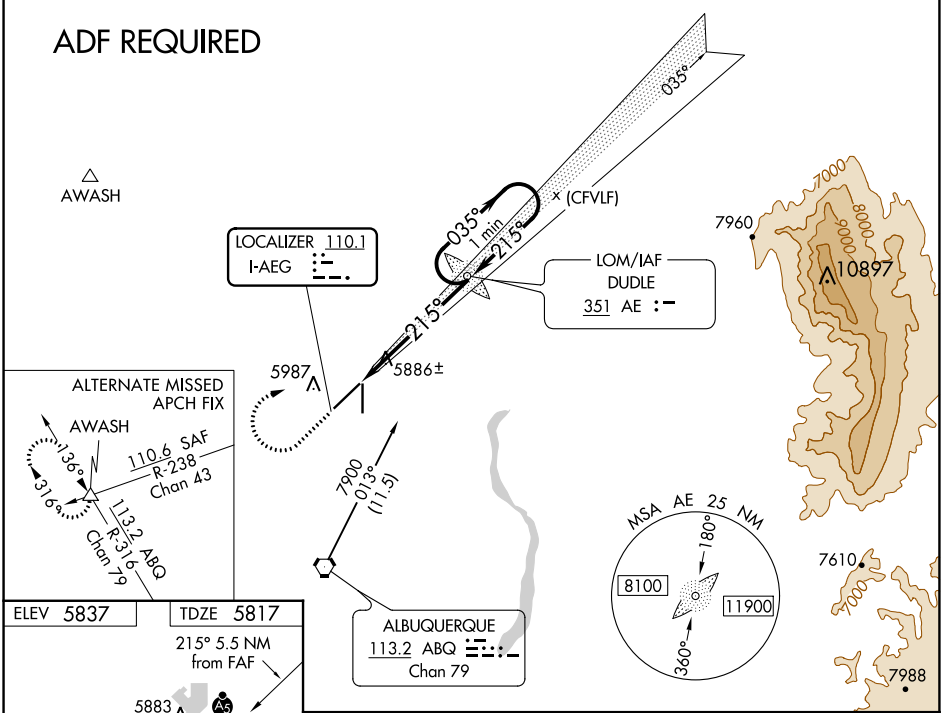
ILS or LOC RWY 22

DOUBLE EAGLE II (A/E/G)

<p>NA When local altimeter setting not received, use Albuquerque Intl Suport altimeter setting and increase all DA 94 feet, increase all MDA 100 feet, and increase visibility S-LOC 22 Cats C/D ¼ mile, Circling Cats C/D ½ mile. For inop MALSr when using Albuquerque Intl Suport altimeter setting, increase visibility S-ILS 22 all Cats ¾ mile.</p>	<p>MALSr</p>	<p>MISSED APPROACH: Climb to 6500 then climbing right turn 7700 direct DUDLE LOM and hold.</p>
--	---------------------	---

<p>ATIS 119.025</p>	<p>ALBUQUERQUE APP CON 127.4 253.5</p>	<p>DOUBLE EAGLE II TOWER * 120.15 (CTAF) 0</p>	<p>GND CON 121.625</p>	<p>CLNC DEL 124.8 (When twr closed)</p>
--------------------------------	---	--	-----------------------------------	--

ADF REQUIRED



	5.5 NM			
CATEGORY	A	B	C	D
S-ILS 22	6017-½ 200 (200-½)			
S-LOC 22	6140-½ 323 (400-½)			
<input checked="" type="checkbox"/> CIRCLING	6400-1	563 (600-1)	6420-1½ 583 (600-1½)	6640-2½ 803 (900-2½)

SW-1, 23 FEB 2023 to 23 MAR 2023

SW-1, 23 FEB 2023 to 23 MAR 2023