

WAAS CH 90525 W04B	APP CRS 039°	Rwy Idg TDZE Apt Elev	5100 1384 1394
--	------------------------	-----------------------------	---

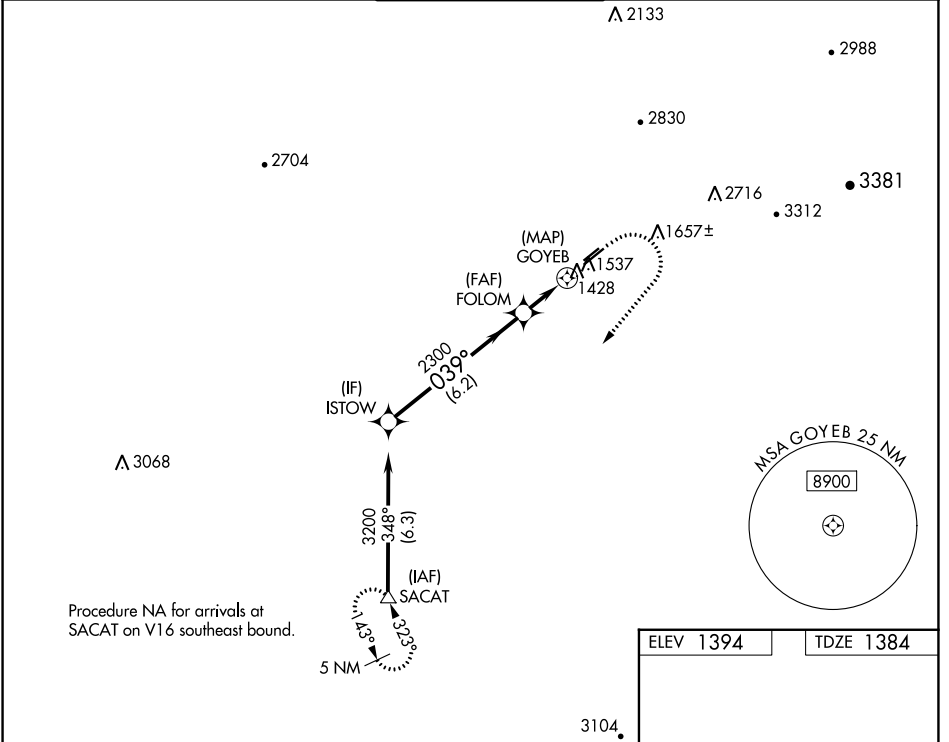
RNAV (GPS) RWY 4R

FALCON FLD (F'F'Z)

RNP APCH. MISSED APPROACH: Climb to 1900 then climbing right turn to 5000 direct SACAT and hold, continue climb-in-hold to 5000.

⚠ Circling to Rwy 22L, 22R NA at night. Circling NA for Cat C southeast of Rwy 4R and 22L.

ATIS 118.25	PHOENIX APP CON 120.7 239.0	FALCON TOWER ★ 124.6 (CTAF) 0	GND CON 121.3	UNICOM 122.95
-----------------------	---------------------------------------	--	-------------------------	-------------------------

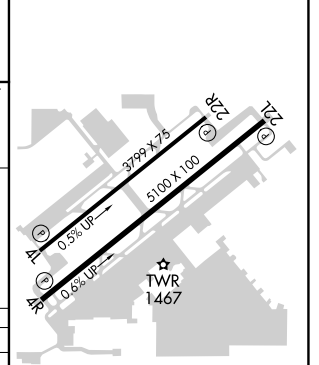
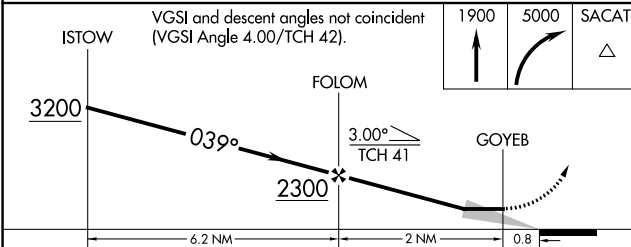


SW-4, 23 FEB 2023 to 23 MAR 2023

SW-4, 23 FEB 2023 to 23 MAR 2023

Procedure NA for arrivals at SACAT on V16 southeast bound.

ELEV 1394	TDZE 1384
-----------	-----------



CATEGORY	A	B	C	D
LP MDA	1680-1 296 (300-1)			NA
LNAV MDA	1800-1	416 (500-1)	1800-1 ¹ / ₈ 416 (500-1 ¹ / ₈)	NA
C CIRCLING	1860-1 466 (500-1)	1980-1 586 (600-1)	2040-1 ³ / ₄ 646 (700-1 ³ / ₄)	NA

REIL Rwy 4R, 4L, 22L and 22R
MIRL Rwy 4R-22L **0**
MIRL Rwy 4L-22R