

APP CRS **190°**
 Rwy Idg **5201**
 TDZE **726**
 Apt Elev **726**

RNAV (GPS) RWY 19

JAMES A RHODES (JRO)

RNP APCH - GPS.

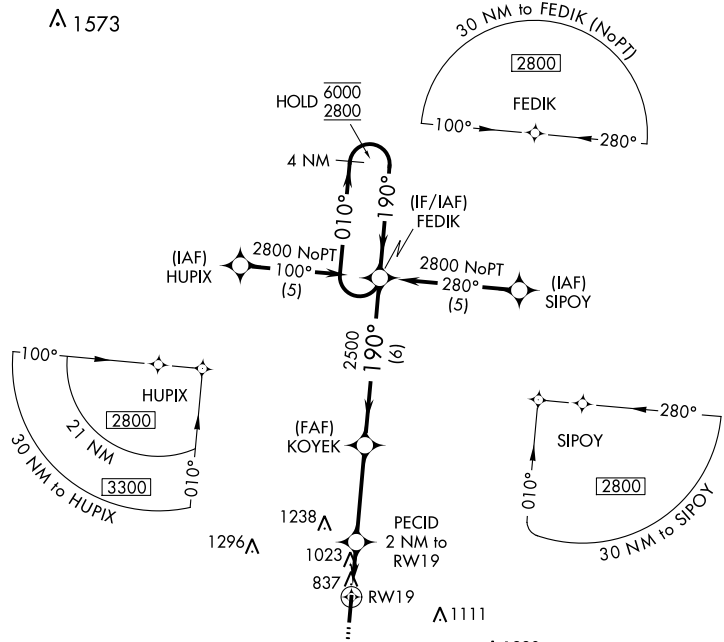
▼ Procedure NA at night.
▲ Rwy 19 helicopter visibility reduction below 1 SM NA.

MISSED APPROACH: Climb to 2800 direct OSATE and hold.

AWOS-3 **118.825**

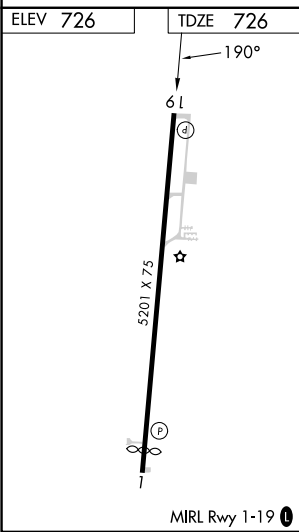
HUNTINGTON APP CON **128.4 270.1**

UNICOM **122.7 (CTAF) 0**



EC-2, 23 FEB 2023 to 23 MAR 2023

EC-2, 23 FEB 2023 to 23 MAR 2023



ELEV 726	TDZE 726	MISSED APCH FIX OSATE	
2800	OSATE	VGSI and descent angles not coincident (VGSI Angle 4.00/TCH 45).	
KOEK		FEDIK 4 NM Holding Pattern	
PECID 2 NM to RW19		RW19	
3.32° TCH 40		1460	
2500		6000	
190°		010°	
190°		2800	
2 NM		3.5 NM	
6 NM			
CATEGORY	A	B	C
LNAV MDA	1280-1	554 (600-1)	1280-1½ 554 (600-1½)
CIRCLING	1340-1 614 (700-1)	1480-1 754 (800-1)	1680-3 954 (1000-3)