

WAAS CH 48905 W29A	APP CRS 291°	Rwy Idg TDZE 1004 Apt Elev 1004
--	------------------------	---

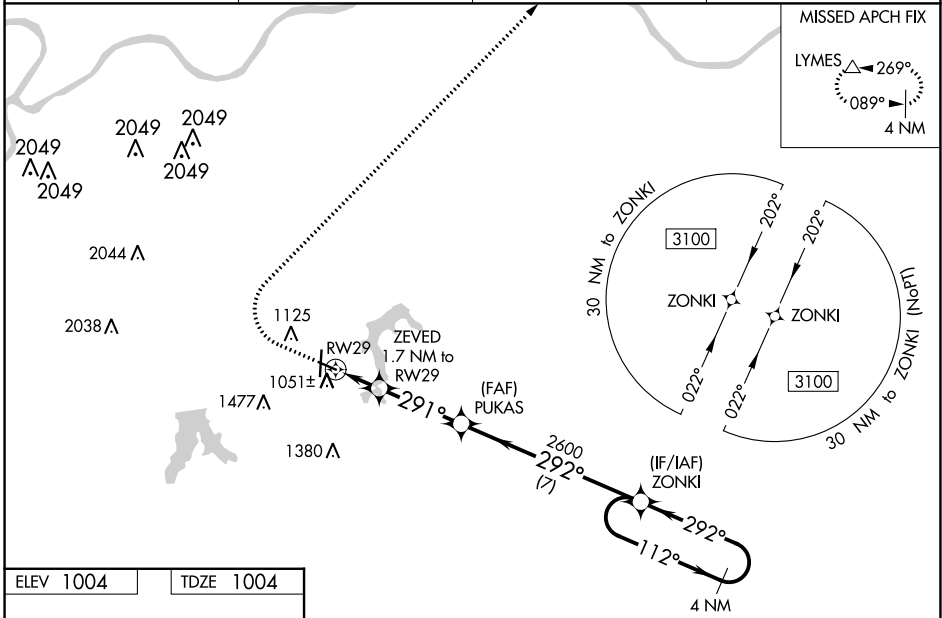
RNAV (GPS) RWY 29

LEE'S SUMMIT MUNI (LXT)

⚠ For uncompensated Baro-VNAV systems, LNAV/VNAV NA below -17°C (2°F) or above 54°C (130°F). DME/DME RNP-0.3 NA. VDP and Baro-VNAV NA when using Charles B. Wheeler Downtown altimeter setting. When local altimeter setting not received, use Charles B. Wheeler Downtown altimeter setting: increase LPV DA to 1322 feet and all visibilities 1/8 SM; increase LNAV/VNAV DA to 1359 feet and all visibilities 1/8 SM; increase all MDA 80 feet and visibility Cats C and D 1/4 SM.

MISSED APPROACH: Climb to 1500 then climbing right turn to 3000 direct LYMES and hold.

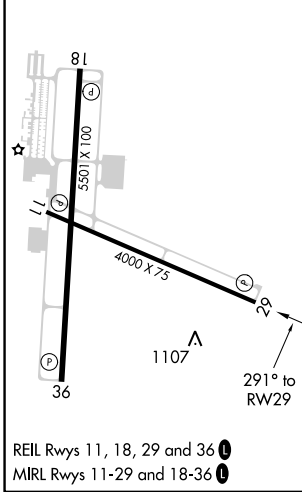
ASOS 124.175	KANSAS CITY APP CON 118.4 307.35	CLNC DEL 118.45	UNICOM 122.8 (CTAF) 0
------------------------	--	---------------------------	---------------------------------



NC-3, 23 FEB 2023 to 23 MAR 2023

NC-3, 23 FEB 2023 to 23 MAR 2023

ELEV 1004	TDZE 1004
-----------	-----------



1500	3000	LYMES		
* LNAV only		ZEVED 1.7 NM to RWY 29	PUKAS 2600	ZONKI 4 NM Holding Pattern
* 1 NM to RWY 29		1580*	2600	3100
-1 NM		0.7 NM	3.2 NM	7 NM
GP 3.00°	TCH 40			
CATEGORY	A	B	C	D
LPV DA		1254-3/4	250 (300-3/4)	
LNAV/VNAV DA		1291-7/8	287 (300-7/8)	
LNAV MDA		1360-1	356 (400-1)	
C CIRCLING	1440-1 436 (500-1)	1540-1 536 (600-1)	1780-2 1/4 776 (800-2 1/4)	1780-2 1/2 776 (800-2 1/2)