

WAAS CH <b>82204</b> <b>W18A</b>	APP CRS <b>181°</b>	Rwy Idg TDZE Apt Elev	<b>5501</b> <b>999</b> <b>1004</b>
--	------------------------	-----------------------------	--

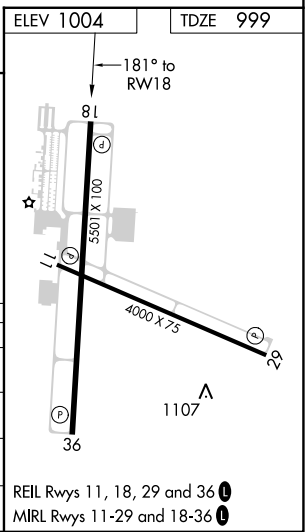
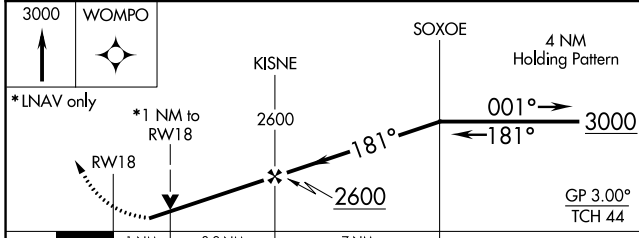
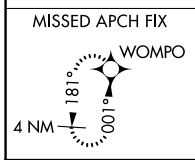
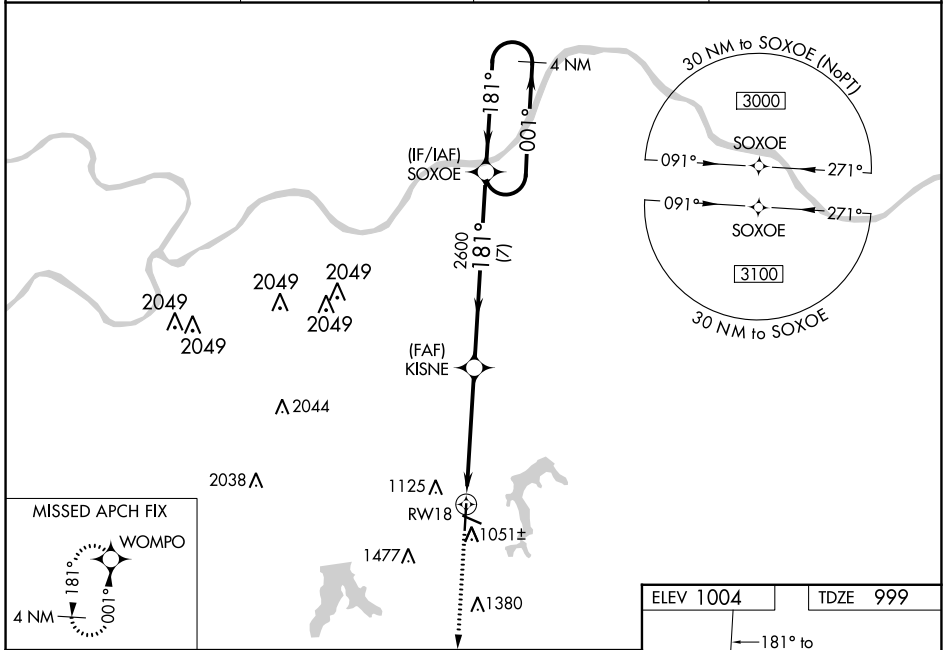
# RNAV (GPS) RWY 18

LEE'S SUMMIT MUNI (LXT)

**⚠** For uncompensated Baro-VNAV systems, LNAV/VNAV NA below -17°C (2°F) or above 54°C (130°F).  
**⚠** Rwy 18 helicopter visibility reduction below 3/4 SM NA. DME/DME RNP-0.3 NA. Baro-VNAV and VDP NA when using Charles B. Wheeler Downtown altimeter setting. When local altimeter setting not received, use Charles B. Wheeler Downtown altimeter setting: increase LPV DA to 1317 feet and all visibilities 1/8 SM; increase LNAV/VNAV DA to 1434 feet and all visibilities 1/4 SM; increase all MDA 80 feet and LNAV visibility Cat C and D 3/8 SM, Circling Cats C and D 1/4 SM.

**MISSED APPROACH:**  
 Climb to 3000 direct WOMPO and hold.

ASOS <b>124.175</b>	KANSAS CITY APP CON <b>118.4 307.35</b>	CLNC DEL <b>118.45</b>	UNICOM <b>122.8</b> (CTAF) <b>0</b>
------------------------	--	---------------------------	--



CATEGORY	A	B	C	D
LPV DA		1249-3/4	250 (300-3/4)	
LNAV/VNAV DA		1366-1	367 (400-1)	
LNAV MDA		1360-1	361 (400-1)	
<b>C</b> CIRCLING	1440-1 436 (500-1)	1540-1 536 (600-1)	1780-2 1/4 776 (800-2 1/4)	1780-2 1/2 776 (800-2 1/2)

REIL Rwy 11, 18, 29 and 36 **0**  
 MIRL Rwy 11-29 and 18-36 **0**

NC-3, 23 FEB 2023 to 23 MAR 2023

NC-3, 23 FEB 2023 to 23 MAR 2023