

CHIEF EIGHT DEPARTURE

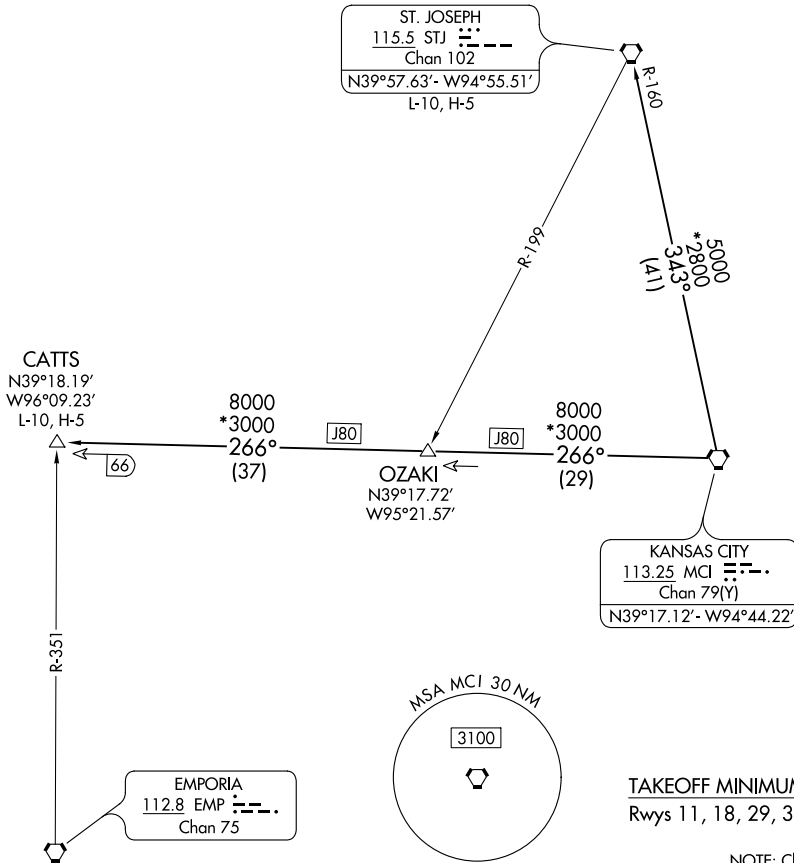
AL-6104 (FAA)

LEE'S SUMMIT MUNI (LXT)
LEE'S SUMMIT, MISSOURI

**TOP ALTITUDE:
10000**

RADAR required.

CLNC DEL
118.45
KANSAS CITY DEP CON
118.4 307.35



NC-3, 23 FEB 2023 to 23 MAR 2023

NC-3, 23 FEB 2023 to 23 MAR 2023

NOTE: Chart not to scale.



DEPARTURE ROUTE DESCRIPTION

TAKEOFF ALL RUNWAYS: Climb on assigned heading for RADAR vectors to appropriate route. Maintain 10000 or as assigned by ATC, expect filed altitude 10 minutes after departure.

CATTS TRANSITION (CHIEF8.CATTS): From over MCI VORTAC on MCI R-266 to CATTS.

ST. JOSEPH TRANSITION (CHIEF8.STJ): From over MCI VORTAC on MCI R-343 and STJ R-160 to STJ VORTAC.

CHIEF EIGHT DEPARTURE

(CHIEF8.MCI) 23FEB23

LEE'S SUMMIT, MISSOURI
LEE'S SUMMIT MUNI (LXT)