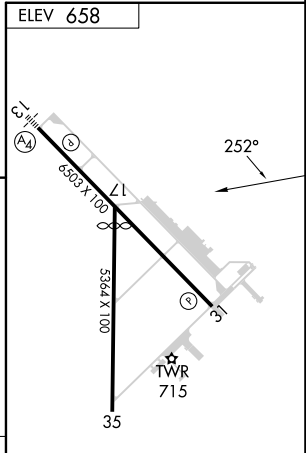
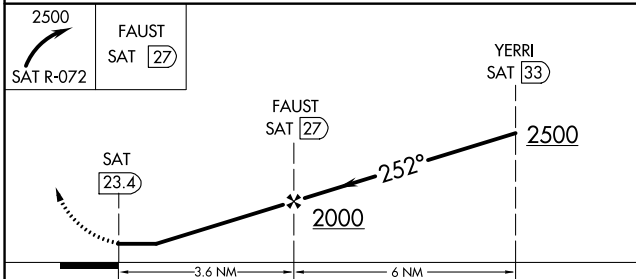
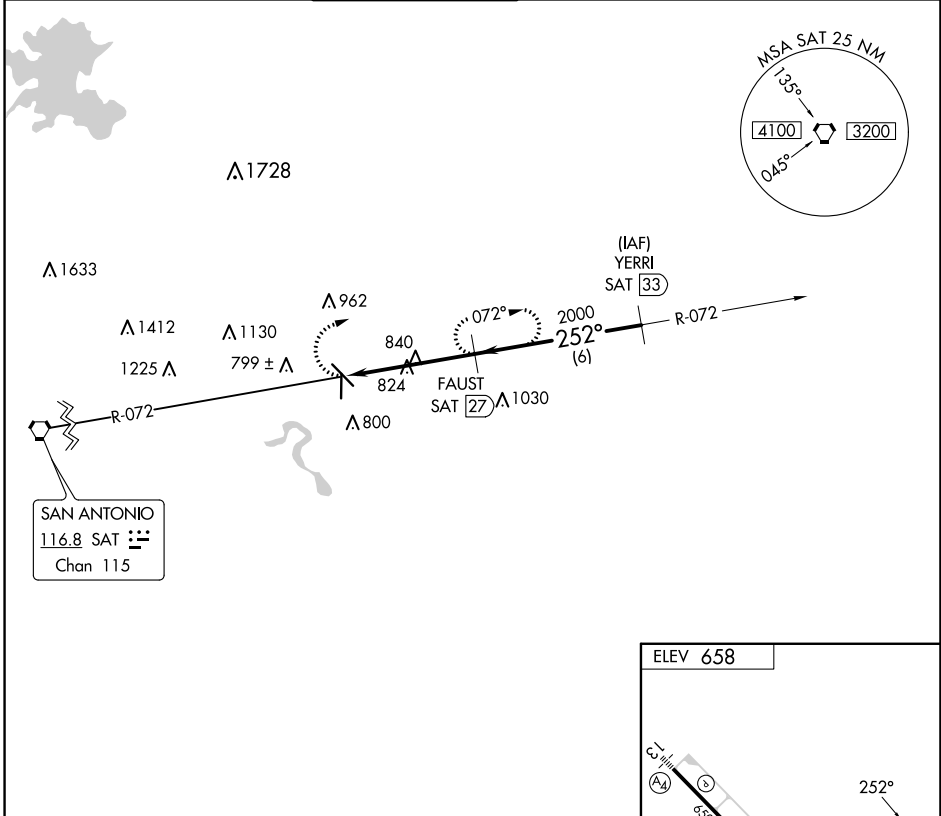


VORTAC SAT 116.8 Chan 115	APP CRS 252°	Rwy Idg TDZE Apt Elev	N/A N/A 658
---	------------------------	-----------------------------	--

VOR/DME-A
NEW BRAUNFELS NTL (BAZ)

RADAR required for procedure entry.		MISSED APPROACH: Climbing right turn to 2500 on SAT R-072 to FAUST/27 DME and hold.		
-------------------------------------	--	---	--	--

ATIS 119.325	SAN ANTONIO APP CON 124.45 335.625	NEW BRAUNFELS TOWER* 127.05 (CTAF) 285.4	GND CON 120.175	CLNC DEL 134.75	CLNC DEL 134.75 (When twr closed)	UNICOM 122.7
------------------------	--	--	---------------------------	---------------------------	--	------------------------



CATEGORY	A	B	C	D
CIRCLING	1180-1 522 (600-1)	1240-1¼ 582 (600-1¼)	1280-1¾ 622 (700-1¾)	1320-2 662 (700-2)

REIL Rwy 13
MIRL Rwy 13-31 and 17-35

SC-3, 23 FEB 2023 to 23 MAR 2023

SC-3, 23 FEB 2023 to 23 MAR 2023