

WAAS CH 87104 W18A	APP CRS 185°	Rwy Idg 4999 TDZE 418 Apt Elev 418
----------------------------------------	------------------------	---------------------------------------------------------------

RNAV (GPS) RWY 18

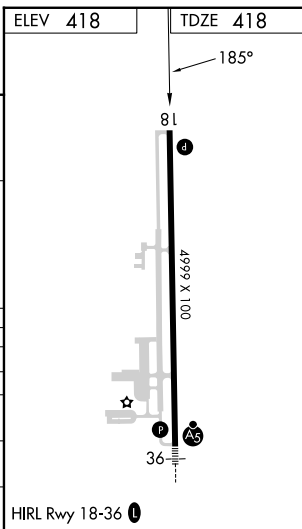
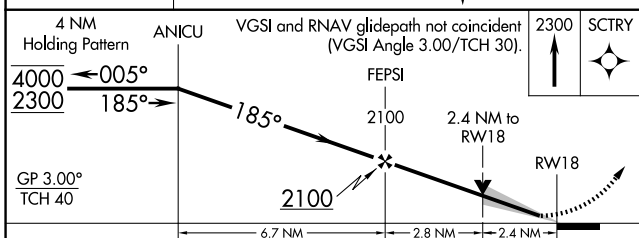
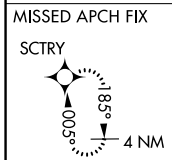
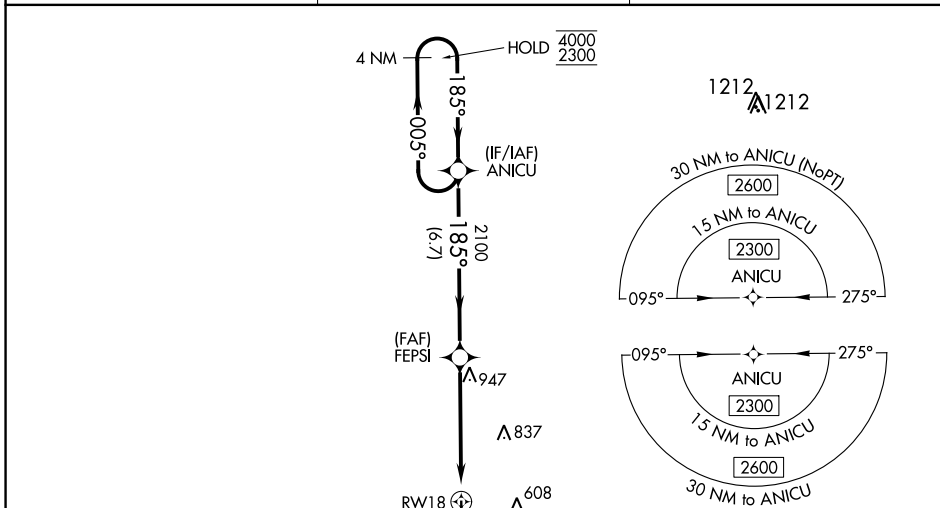
PERRY-HOUSTON COUNTY (PXE)

RNP APCH-GPS.

▼ Baro-VNAV and VDP NA when using Middle Georgia Rgnl altimeter setting.
 ▲ For uncompensated Baro-VNAV systems, LNAV/VNAV NA below -15°C or above 54°C.
 When local altimeter setting not received, use Middle Georgia Rgnl altimeter setting and increase LPV DA to 656 feet; increase LNAV/VNAV DA to 857 feet and all visibilities ½ SM. Increase all MDAs 40 feet; and Circling visibility Cat A and D ¼ SM.

MISSED APPROACH: Climb to 2300 direct SCTRY and hold.

AWOS-3 123.825	ATLANTA APP CON ★ 124.2 279.6	UNICOM 122.725 (CTAF) 0
--------------------------	-----------------------------------------	-----------------------------------



CATEGORY	A	B	C	D
LPV DA	618-¾ 200 (200-¾)			
LNAV/VNAV DA	819-1⅛ 401 (500-1⅛)			
LNAV MDA	1200-1 782 (800-1)	1200-1¼ 782 (800-1¼)	1200-2½ 782 (800-2½)	782 (800-2½)
CIRCLING	1200-1 782 (800-1)	1200-1¼ 782 (800-1¼)	1200-2½ 782 (800-2½)	1280-2¾ 862 (900-2¾)

SE-4, 23 FEB 2023 to 23 MAR 2023

SE-4, 23 FEB 2023 to 23 MAR 2023