

# MMALT FIVE DEPARTURE (RNAV)

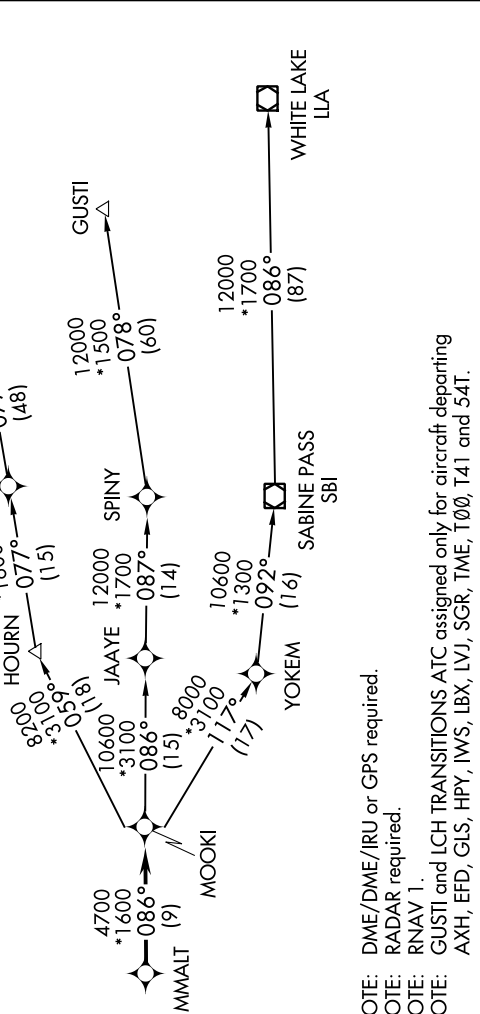
SC-5, 23 FEB 2023 to 23 MAR 2023

### TAKEOFF MINIMUMS

Rwy 14, 32: Standard with minimum climb of 500' per NM to 540.

CTAF  
122.8  
HOUSTON DEP CON  
134.45 284.0

### TOP ALTITUDE: ASSIGNED BY ATC



NOTE: DME/DME/IRU or GPS required.  
NOTE: RADAR required.  
NOTE: RNAV 1.  
NOTE: GUSTI and LCH TRANSITIONS ATC assigned only for aircraft departing AXH, EFD, GLS, HPY, IWS, LBX, LVJ, SGR, TME, T00, T41 and 54T.

### DEPARTURE ROUTE DESCRIPTION

**TAKEOFF Rwy 14:** Climb on heading 140° to 540 for RADAR vectors to MMALT, thence. . . .  
**TAKEOFF Rwy 32:** Climb on heading 320° to 540 for RADAR vectors to MMALT, thence. . . .  
. . . on track 086° to MOOKI, then on (transition). Maintain ATC assigned altitude.  
Expect filed altitude 10 minutes after departure.

GUSTI TRANSITION (MMALT5.GUSTI)  
LAKE CHARLES TRANSITION (MMALT5.LCH)  
WHITE LAKE TRANSITION (MMALT5.LLA)

NOTE: Chart not to scale.

SC-5, 23 FEB 2023 to 23 MAR 2023