

KARR SEVEN DEPARTURE (RNAV)

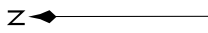
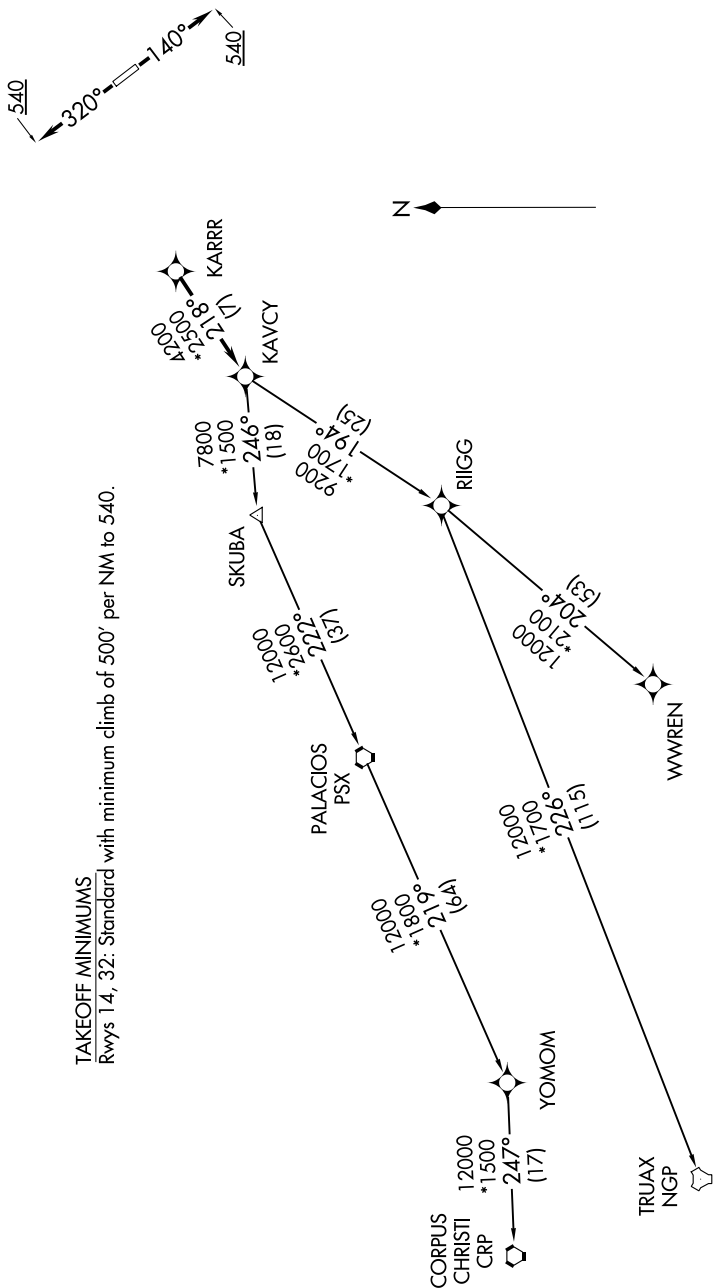
**TOP ALTITUDE:
ASSIGNED BY ATC**

RNAV-1 DME/DME/IRU or GPS.
RADAR required.

CTAF
122.8
HOUSTON DEP CON
134.45 284.0

TAKEOFF MINIMUMS

Rwys 14, 32: Standard with minimum climb of 500' per NM to 540.



NOTE: Chart not to scale.

(NARRATIVE ON FOLLOWING PAGE)

KARR SEVEN DEPARTURE (RNAV)