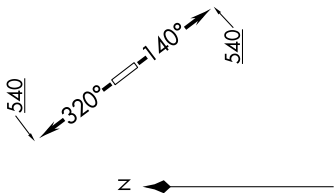


SC-5, 23 FEB 2023 to 23 MAR 2023

CTAF  
 122.8  
 HOUSTON DEP CON  
 134.45 284.0

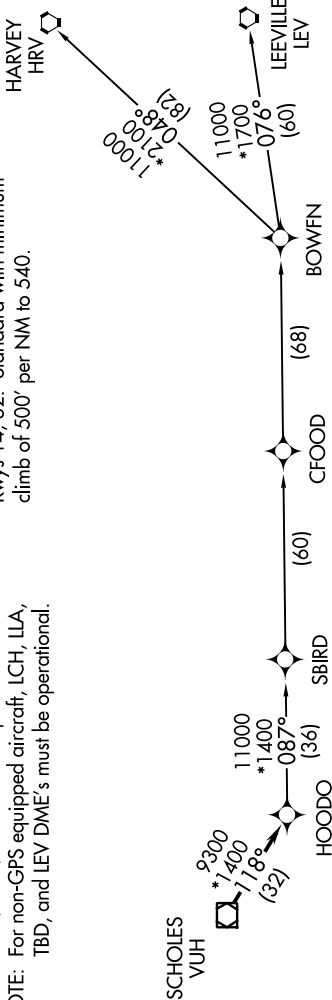


- NOTE: RNAV 1.
- NOTE: RADAR required.
- NOTE: ATC assigned only.
- NOTE: DME/DME/IRU or GPS required.
- NOTE: For non-GPS equipped aircraft, LCH, ILLA, TBD, and LEV DME's must be operational.

**TAKEOFF MINIMUMS**

Rwys 14, 32: Standard with minimum climb of 500' per NM to 540.

**TOP ALTITUDE:  
 ASSIGNED BY ATC**



NOTE: Chart not to scale.



**DEPARTURE ROUTE DESCRIPTION**

**TAKEOFF RUNWAY 14:** Climb on heading 140° to 540, for RADAR vectors to VUH VOR/DME, thence . . . .  
**TAKEOFF RUNWAY 32:** Climb on heading 320° to 540, for RADAR vectors to VUH VOR/DME, thence . . . .

. . . . on track 118° to HOODO, then on (transition). Maintain ATC assigned altitude.  
 Expect filed altitude 10 minutes after departure.

- BOWFN TRANSITION (HOODO7.BOWFN)
- CFOOD TRANSITION (HOODO7.CFOOD)
- HARVEY TRANSITION (HOODO7.HRV)
- LEEVILLE TRANSITION (HOODO7.LEV)
- SBIRD TRANSITION (HOODO7.SBIRD)

SC-5, 23 FEB 2023 to 23 MAR 2023