

WAAS CH <b>82215</b> <b>W28A</b>	APP CRS <b>277°</b>	Rwy Idg <b>4971</b> TDZE <b>1134</b> Apt Elev <b>1136</b>
--	------------------------	---

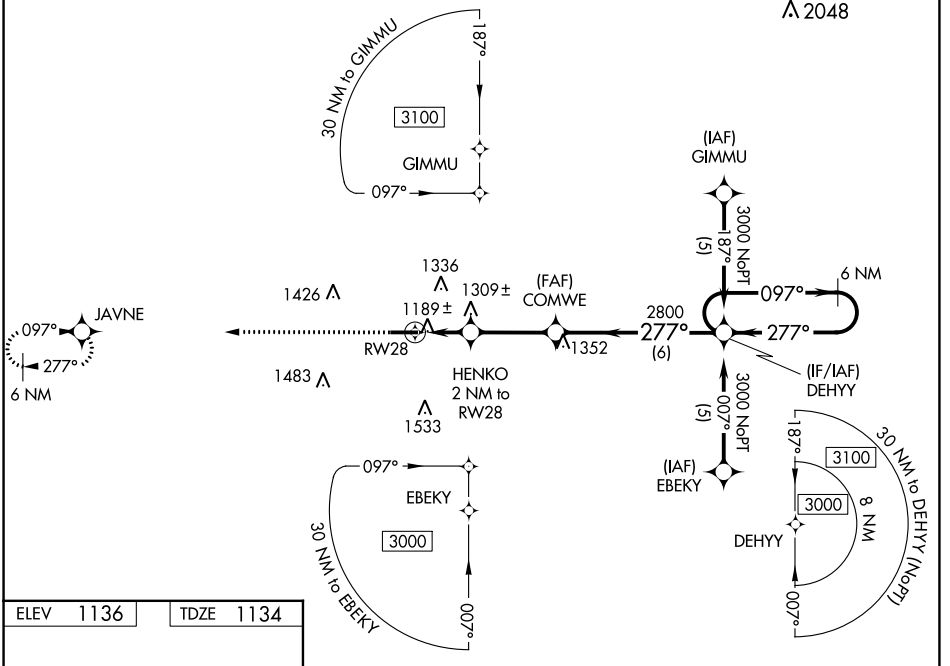
# RNAV (GPS) RWY 28

WAYNE COUNTY (BJJ)

**⚠** Baro-VNAV NA when using Akron-Canton Rgnl altimeter setting. For uncompensated Baro-VNAV systems, LNAV/VNAV NA below -17°C (2°F) or above 54°C (130°F). Helicopter visibility reduction below ¼ SM NA. When local altimeter setting not received, use Akron-Canton Rgnl altimeter setting: increase LPV DA to 1458 feet, LNAV/VNAV DA to 1649 feet, and visibility LPV all Cats ¼ SM and LNAV/VNAV all Cats ½ SM; increase all MDA 60 feet and visibility LNAV Cat C/D ½ SM and Circling Cat C/D ¼ SM.

**MISSED APPROACH:** Climb to 3000 direct JAVNE and hold.

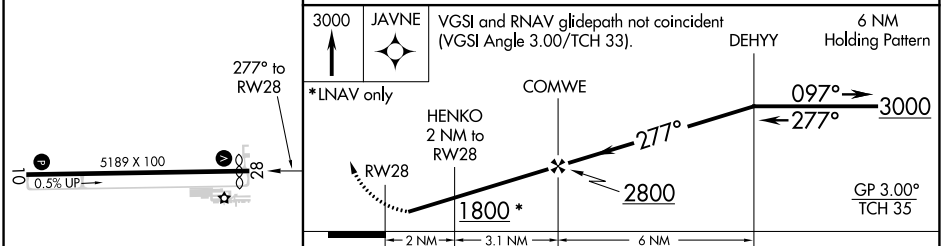
ASOS <b>118.075</b>	CLEVELAND APP CON * <b>118.6 371.875</b>	CLNC DEL <b>121.75</b>	UNICOM <b>122.8 (CTAF) 0</b>
------------------------	---	---------------------------	---------------------------------



EC-2, 23 FEB 2023 to 23 MAR 2023

EC-2, 23 FEB 2023 to 23 MAR 2023

ELEV 1136	TDZE 1134
-----------	-----------



CATEGORY	A	B	C	D
LPV DA	1398-1 264 (300-1)			
LNAV/ VNAV DA	1589-1½ 455 (500-1½)			
LNAV MDA	1560-1	426 (500-1)	1560-1¼	426 (500-1¼)
CIRCLING	1600-1 464 (500-1)	1700-1 564 (600-1)	1800-1¾ 664 (700-1¾)	1840-2¼ 704 (800-2¼)

REIL Rwy 10 and 28 **0**  
HIRL Rwy 10-28 **0**