

WESTMINSTER, MARYLAND

AL-5533 (FAA)

21140

WAAS CH 82117 W34A	APP CRS 339°	Rwy Idg 5100 TDZE 788 Apt Elev 789
--	------------------------	---

RNAV (GPS) RWY 34

CARROLL COUNTY RGNL/JACK B POAGE FLD (DMW)

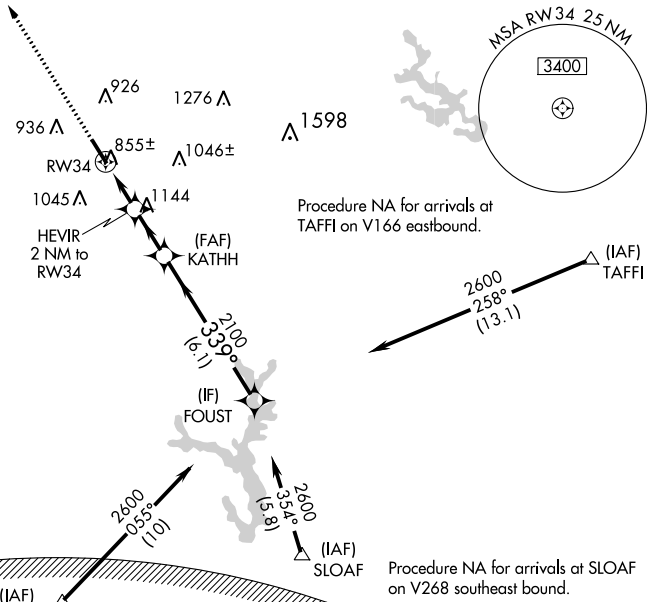
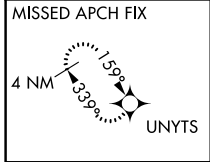
RNP APCH

▼ For uncompensated Baro-VNAV systems, LNAV/VNAV NA below -16°C (4°F) or above 54°C (130°F).

▲

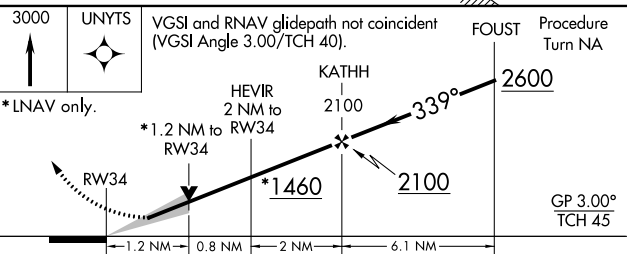
MISSED APPROACH: Climb to 3000 direct UNYTS and hold

AWOS-3 121.25	POTOMAC APP CON 125.525 291.625	GCO 121.725	UNICOM 122.7 (CTAF) 0
-------------------------	---	-----------------------	---------------------------------



ELEV 789	TDZE 788
----------	----------

WASHINGTON DC METROPOLITAN SFRA
 WARNING -- WASHINGTON DC SFRA.
 CTC POTOMAC APP CON



CATEGORY	A	B	C	D
LPV DA	988-1	200 (200-1)		NA
LNAV/VNAV DA	1105-1¼	317 (400-1¼)		NA
LNAV MDA	1180-1	392 (400-1)		NA
CIRCLING	1320-1	1400-1	1500-2	NA
	531 (600-1)	611 (700-1)	711 (800-2)	

WESTMINSTER, MARYLAND
 Amdt 1C 20MAY21

CARROLL COUNTY RGNL/JACK B POAGE FLD (DMW)
 39°36'N-77°00'W
RNAV (GPS) RWY 34

NE-3, 23 FEB 2023 to 23 MAR 2023

NE-3, 23 FEB 2023 to 23 MAR 2023