

APP CRS	Rwy Idg	4899
083°	TDZE	634
	Apt Elev	634

RNAV (GPS) RWY 8

GRIFFITH-MERRILLVILLE (Ø5C)

RNP APCH

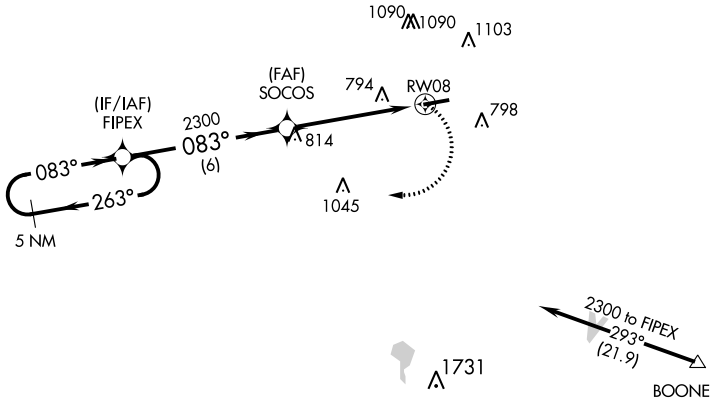
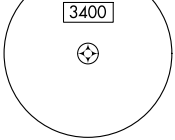
▼ Obtain local altimeter setting on CTAF; when not received use Chicago Midway
 ▲ NA Init altimeter setting and increase all MDAs 60 feet. Visibility reduction by
 ▲ NA helicopters NA. Procedure NA at night.

MISSED APPROACH: Climbing right turn to 2300 direct FIPEX and hold.

CHICAGO APP CON
133.1 285.6

UNICOM
123.0 (CTAF) 0

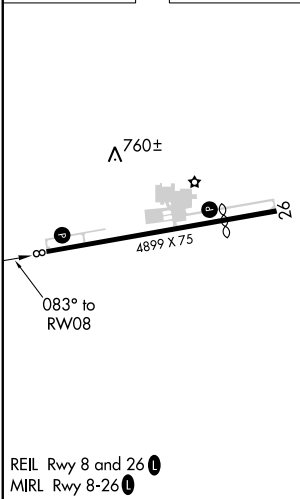
MSA RW08 25 NM



EC-2, 23 FEB 2023 to 23 MAR 2023

EC-2, 23 FEB 2023 to 23 MAR 2023

ELEV 634 TDZE 634



REIL Rwy 8 and 26
 MIRL Rwy 8-26

Procedure NA for arrivals at BOONE via V422 southeastbound.

5 NM Holding Pattern	VGSi and descent angles not coincident (VGSi Angle 3.50/TCH 44).		2300	FIPEX
	FIPEX	SOCOS		
2300 ← 263°	083° →	2300	083°	RWY 08
		3.04° TCH 41		
		6 NM	5 NM	
CATEGORY	A	B	C	D
LNNAV MDA	1080-1	446 (500-1)		NA
<input checked="" type="checkbox"/> CIRCLING	1200-1	566 (600-1)		NA