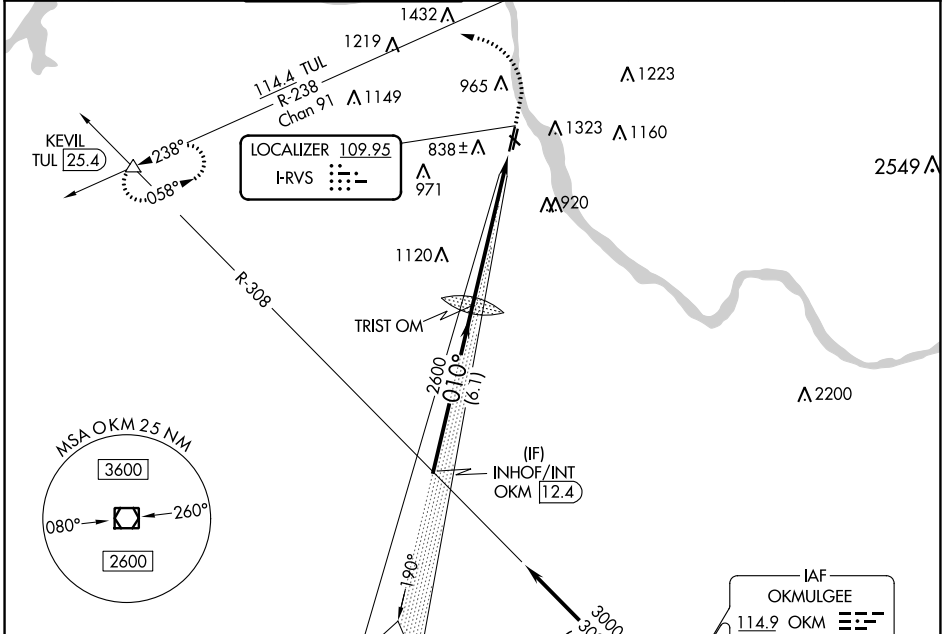


LOC I-RVS	APP CRS	Rwy Idg	5102
109.95	010°	TDZE	626
		Apt Elev	638

ILS or LOC RWY 1L

TULSA RIVERSIDE (RVS)

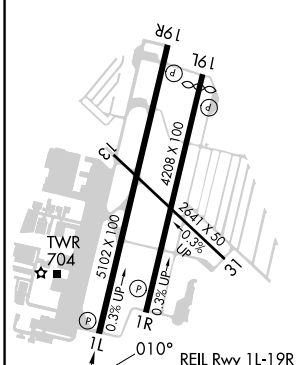
<p>Circling NA northeast of Rwsy 31 and 19L.</p>		<p>MISSED APPROACH: Climb to 1500 then climbing left turn to 2600 on heading 280° and TUL VORTAC R-238 to KEVIL INT/TUL 25.4 DME and hold.</p>			
ATIS	TULSA APP CON	RIVERSIDE TOWER ★	GND CON	CLNC DEL	UNICOM
126.5	134.7	120.3 (CTAF) 0	121.7	124.5	122.95



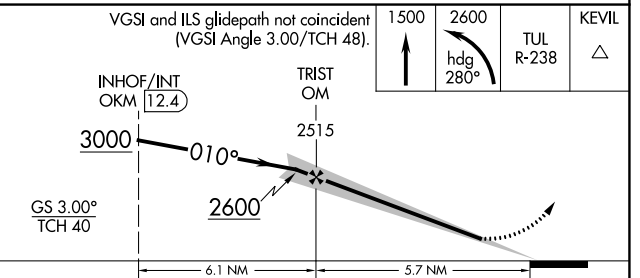
SC-1, 23 FEB 2023 to 23 MAR 2023

SC-1, 23 FEB 2023 to 23 MAR 2023

ELEV 638	D	TDZE 626
----------	----------	----------



Procedure NA for arrival on OKM VOR/DME airway radials 308 CW 359.



FAF to MAP 5.7 NM					
Knots	60	90	120	150	180
Min:Sec	5:42	3:48	2:51	2:17	1:54
CIRCLING	1260-1 622 (700-1)	1280-1 642 (700-1)	1280-1 3/4 642 (700-1 3/4)	1360-2 1/4 722 (800-2 1/4)	