

APP CRS	Rwy Idg	3199
276°	TDZE	719
	Apt Elev	724

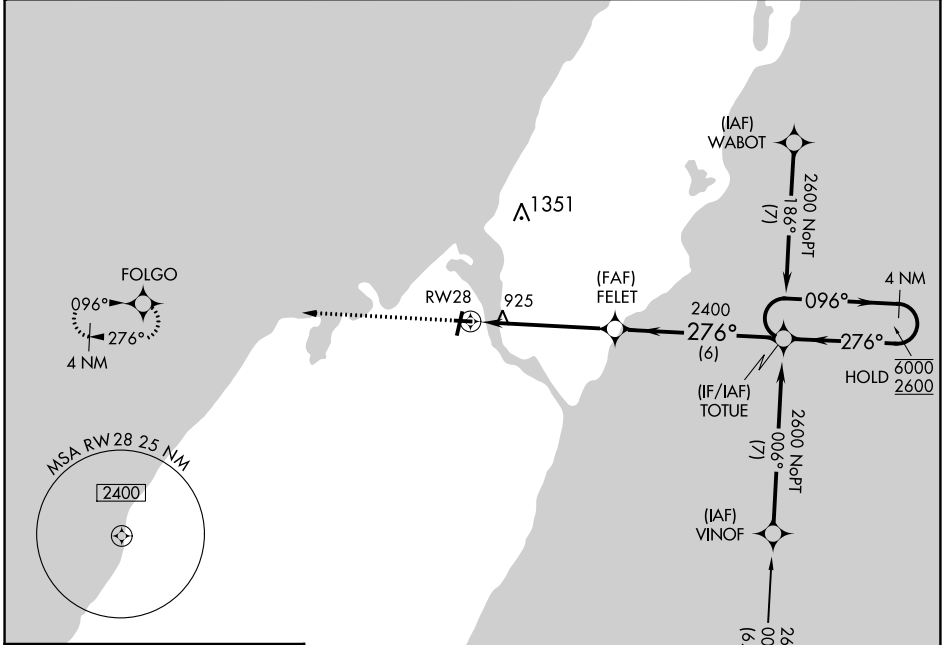
RNAV (GPS) RWY 28

DOOR COUNTY CHERRYLAND (SUE)

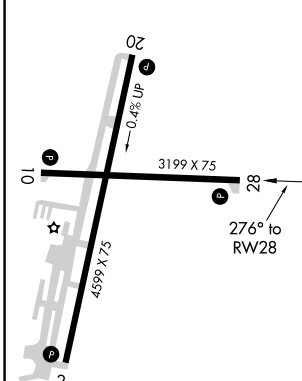
RNP APCH - GPS.
 Rwy 28 helicopter visibility reduction below 3/4 SM NA.

MISSED APPROACH: Climb to 2600 direct FOLGO and hold.

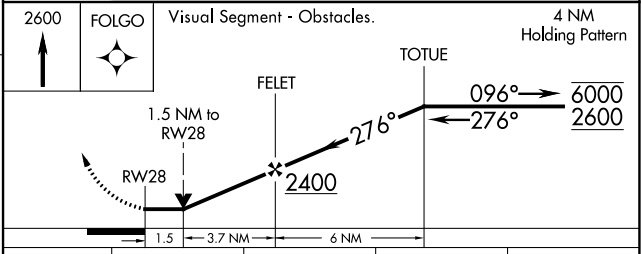
AWOS-3PT 128.325	GREEN BAY APP CON ★ 119.25 338.2	UNICOM 122.7 (CTAF) 0
----------------------------	--	---------------------------------



ELEV 724	TDZE 719
----------	----------



Procedure NA for arrivals at ZUXIN on V420 westbound.



CATEGORY	A	B	C	D
LNAV MDA	1240-1	521 (600-1)	1240-1½ 521 (600-1½)	NA
C CIRCLING	1280-1	556 (600-1)	1280-1½ 556 (600-1½)	NA

RLS Rwy 2 (L)
 REIL Rwy 2, 10, 20 and 28 (L)
 MIRL Rwy 2-20 and 10-28 (L)

EC-3, 23 FEB 2023 to 23 MAR 2023

EC-3, 23 FEB 2023 to 23 MAR 2023