

WAAS CH 86304 W20A	APP CRS 196°	Rwy Idg TDZE 724 Apt Elev 724	4599
--	------------------------	---	-------------

RNAV (GPS) RWY 20

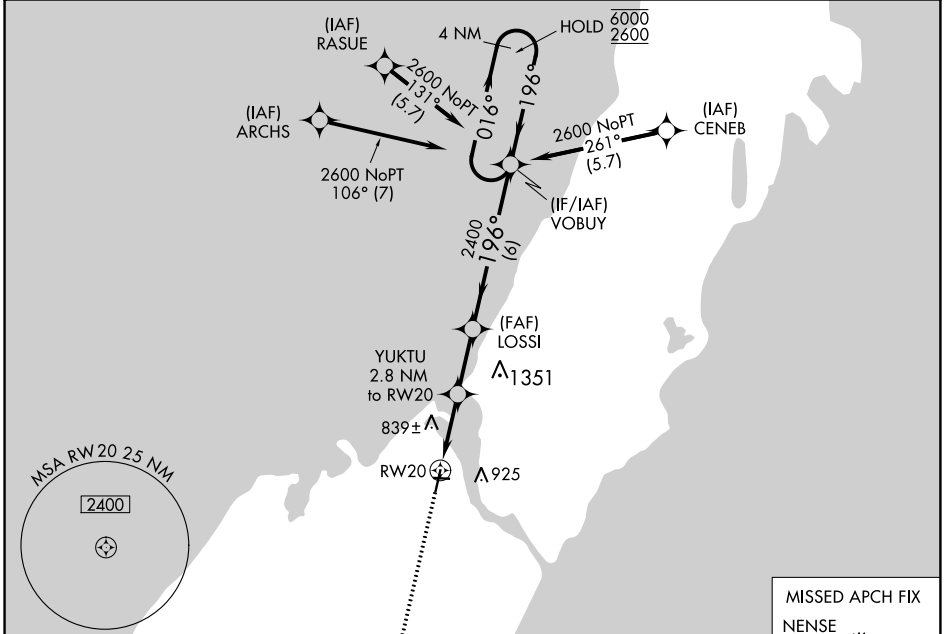
DOOR COUNTY CHERRYLAND (SUE)

RNP APCH - GPS.

For uncompensated Baro-VNAV systems, LNAV/VNAV NA below -16°C or above 54°C.

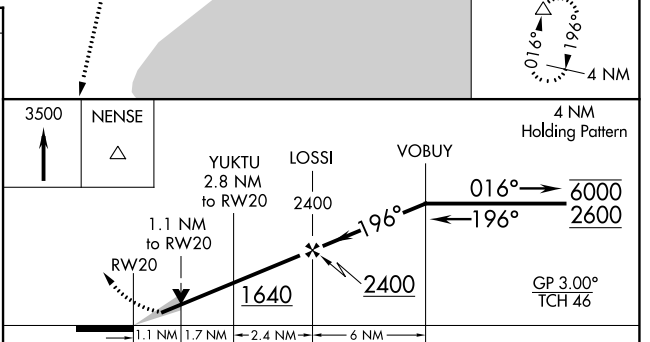
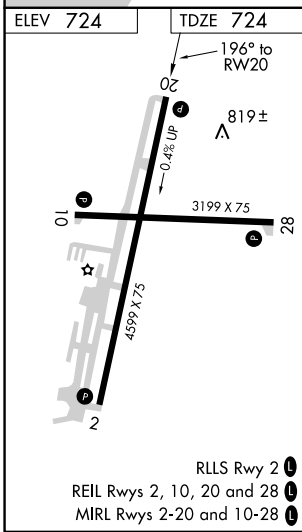
MISSED APPROACH: Climb to 3500 direct NENSE and hold.

AWOS-3PT 128.325	GREEN BAY APP CON ★ 119.25 338.2	UNICOM 122.7 (CTAF) 0
----------------------------	--	---------------------------------



EC-3, 23 FEB 2023 to 23 MAR 2023

EC-3, 23 FEB 2023 to 23 MAR 2023



CATEGORY	A	B	C	D
LPV DA		974-3/4	250 (300-3/4)	
LNAV/VNAV DA		974-3/4	250 (300-3/4)	
LNAV MDA		1100-1	376 (400-1)	
CIRCLING	1280-1	556 (600-1)	1280-1 1/2 556 (600-1 1/2)	1340-2 616 (700-2)