

MAYNR ONE DEPARTURE (RNAV)

SE-3, 23 FEB 2023 to 23 MAR 2023

ATIS 124.0
CLNC DEL 133.0
GND CON 121.7
TAMiami TOWER * 118.9 (CTAF)
MIAMI DEP CON 125.5 354.1

RNAV1 - DME/DME/IRU or GPS.
From SUIPT to MAXIM: RNAV 1 - GPS.
From SUIPT to CANOA: RNAV 1 - GPS.
RADAR required.

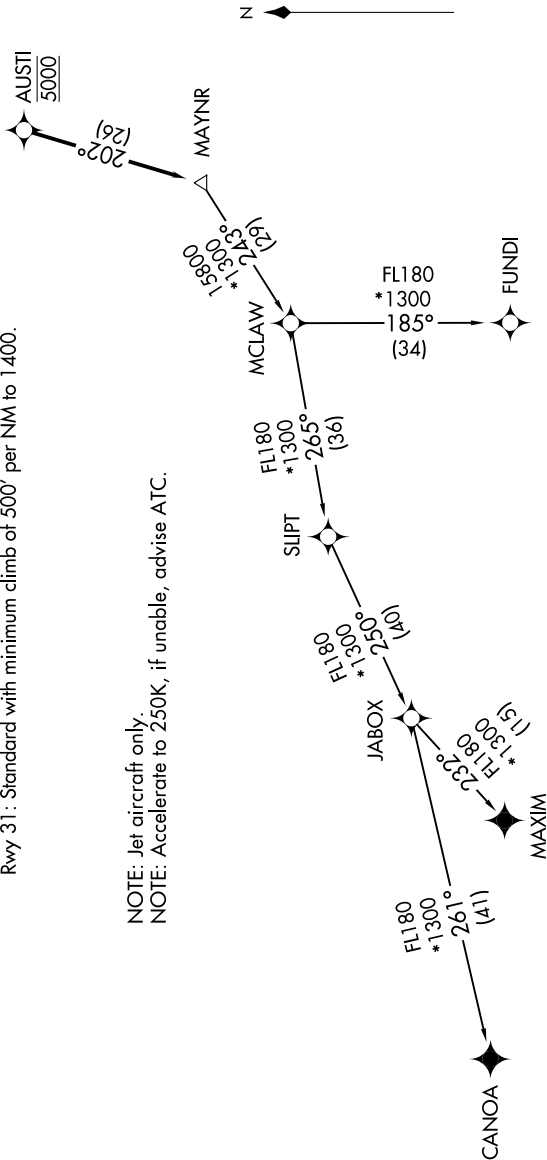
TOP ALTITUDE:
ASSIGNED BY ATC



TAKEOFF MINIMUMS

- Rwy 9L: Standard with minimum climb of 500' per NM to 1300.
- Rwy 9R: Standard with minimum climb of 500' per NM to 1500.
- Rwy 13: Standard with minimum climb of 500' per NM to 1800.
- Rwy 27L: Standard with minimum climb of 500' per NM to 1900.
- Rwy 27R: Standard with minimum climb of 500' per NM to 1700.
- Rwy 31: Standard with minimum climb of 500' per NM to 1400.

NOTE: Jet aircraft only.
NOTE: Accelerate to 250K, if unable, advise ATC.



NOTE: Chart not to scale.

(NARRATIVE ON FOLLOWING PAGE)

SE-3, 23 FEB 2023 to 23 MAR 2023