

LIFRR ONE DEPARTURE (RNAV)

**TOP ALTITUDE:
ASSIGNED BY ATC**

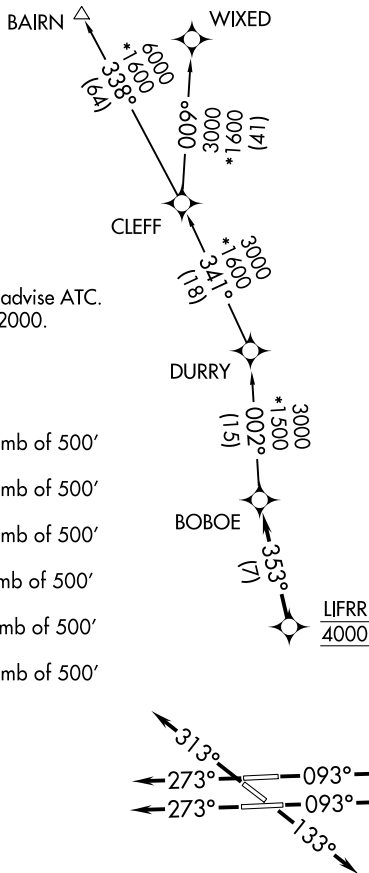
RNAV 1 - DME/DME/IRU or GPS.

RADAR required.

NOTE: Jet aircraft only.
NOTE: Accelerate to 250K, if unable, advise ATC.
NOTE: For aircraft filed at or below 12000.

TAKEOFF MINIMUMS

- Rwy 9L: Standard with minimum climb of 500' per NM to 1300.
- Rwy 9R: Standard with minimum climb of 500' per NM to 1500.
- Rwy 13: Standard with minimum climb of 500' per NM to 1800.
- Rwy 27L: Standard with minimum climb of 500' per NM to 1900.
- Rwy 27R: Standard with minimum climb of 500' per NM to 1700.
- Rwy 31: Standard with minimum climb of 500' per NM to 1400.



ATIS 124.0
 CLNC DEL 133.0
 GND CON 121.7
 TAMMIAMI TOWER * 118.9 (CTAF)
 MIAMI DEP CON 125.5 354.1

SE-3, 23 FEB 2023 to 23 MAR 2023

SE-3, 23 FEB 2023 to 23 MAR 2023

NOTE: Chart not to scale.

DEPARTURE ROUTE DESCRIPTION

- TAKEOFF RUNWAYS 9L/R:** Climb on heading 093° or as assigned by ATC for vectors to cross LIFRR at 4000, thence. . .
- TAKEOFF RUNWAY 13:** Climb on heading 133° or as assigned by ATC for vectors to cross LIFRR at 4000, thence. . .
- TAKEOFF RUNWAYS 27L/R:** Climb on heading 273° or as assigned by ATC for vectors to cross LIFRR at 4000, thence. . .
- TAKEOFF RUNWAY 31:** Climb on heading 313° or as assigned by ATC for vectors to cross LIFRR at 4000, thence. . .

. . . on track 353° to BOBOE, then on assigned transition, maintain ATC assigned altitude, expect clearance to filed altitude within 10 minutes after departure.

BAIRN TRANSITION (LIFRR1.BAIRN)
WIXED TRANSITION (LIFRR1.WIXED)