

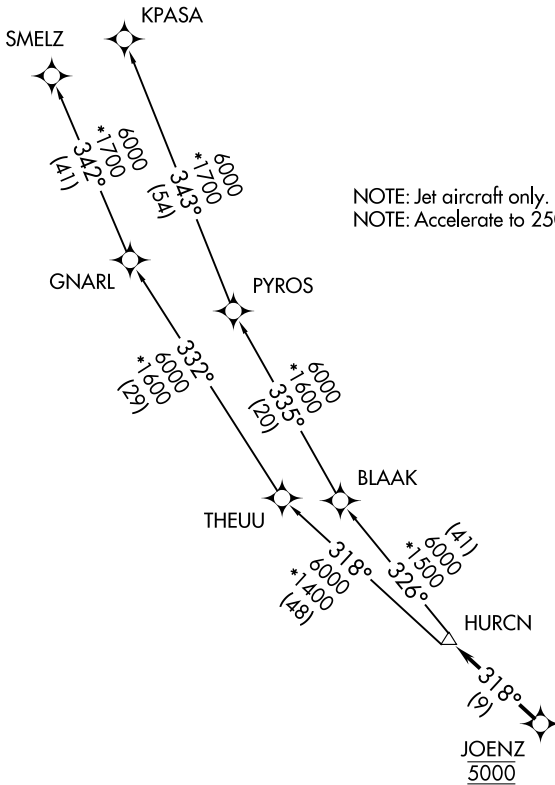
HURCN THREE DEPARTURE (RNAV)

RNAV-1 DME/DME/IRU or GPS.

RADAR required.

**TOP ALTITUDE:
ASSIGNED BY ATC**

ATIS 124.0
CLNC DEL 133.0
GND CON 121.7
TAMiami TOWER ★ 118.9 (CTAF)
MIAMI DEP CON 125.5 354.1



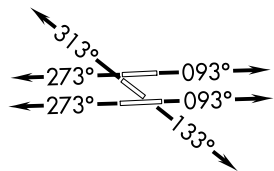
NOTE: Jet aircraft only.
NOTE: Accelerate to 250K, if unable, advise ATC.

SE-3, 23 FEB 2023 to 23 MAR 2023

SE-3, 23 FEB 2023 to 23 MAR 2023

TAKEOFF MINIMUMS

- Rwy 9L: Standard with minimum climb of 500' per NM to 1300.
- Rwy 9R: Standard with minimum climb of 500' per NM to 1500.
- Rwy 13: Standard with minimum climb of 500' per NM to 1800.
- Rwy 27L: Standard with minimum climb of 500' per NM to 1900.
- Rwy 27R: Standard with minimum climb of 500' per NM to 1700.
- Rwy 31: Standard with minimum climb of 500' per NM to 1400.



NOTE: Chart not to scale.

(NARRATIVE ON FOLLOWING PAGE)

HURCN THREE DEPARTURE (RNAV)

(HURCN3.HURCN) 19MAY22