

WAAS CH <b>86738</b> W07A	APP CRS <b>075°</b>	Rwy Idg TDZE Apt Elev	<b>3502</b> <b>8</b> <b>8</b>
---------------------------------	------------------------	-----------------------------	-------------------------------------

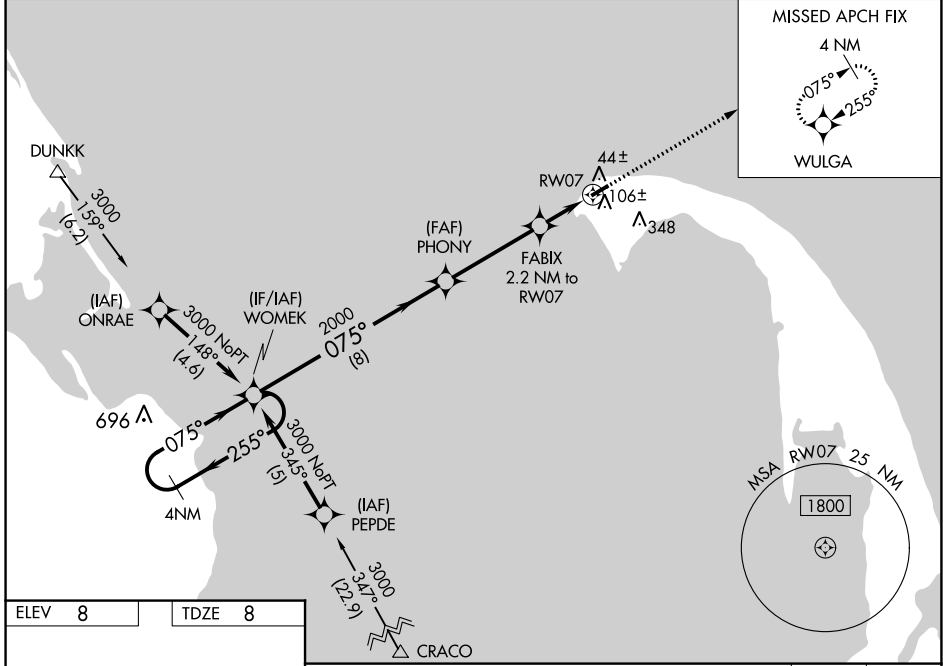
# RNAV (GPS) RWY 7

PROVINCETOWN MUNI (PVC)

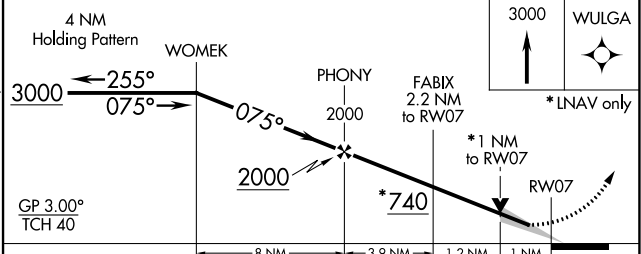
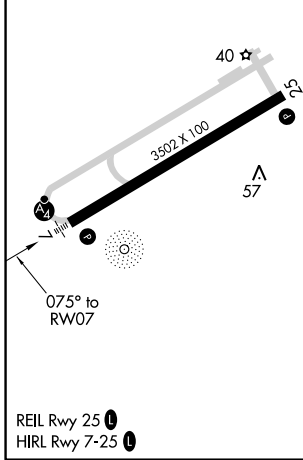
**⚠** For uncompensated Baro-VNAV systems, LNAV/VNAV NA below -15°C (5°F) or above 54°C (130°F). DME/DME RNP-0.3 NA. Inop table does not apply to LPV Cats A and B. When local altimeter setting not received, use Hyannis altimeter setting: increase LPV DA to 271, increase LNAV/VNAV DA to 331, and Cat A/B visibility 1/8 mile and all MDA 80 feet. For inop MALSF when using Hyannis altimeter setting, increase LPV Cat A/B visibility to 7/8 mile. Baro-VNAV and VDP NA when using Hyannis altimeter setting.

**MALSF**  
**MISSED APPROACH:**  
Climb to 3000 direct WULGA and hold.

AWOS-3PT <b>119.275</b>	BOSTON APP CON ★ <b>118.2</b>	CLNC DEL <b>120.65</b>	UNICOM <b>122.8 (CTAF)</b>	<b>122.85</b> <b>⓪</b>
----------------------------	----------------------------------	---------------------------	-------------------------------	------------------------



ELEV <b>8</b>	TDZE <b>8</b>
---------------	---------------



	A	B	C	D
LPV DA	208-3/4	200 (200-3/4)		NA
LNAV/VNAV DA	268-3/4	260 (300-3/4)		NA
LNAV MDA	360-3/4	352 (400-3/4)		NA
<b>⓪</b> CIRCLING	460-1 452 (500-1)	660-1 652 (700-1)		NA

NE-1, 23 FEB 2023 to 23 MAR 2023

NE-1, 23 FEB 2023 to 23 MAR 2023