

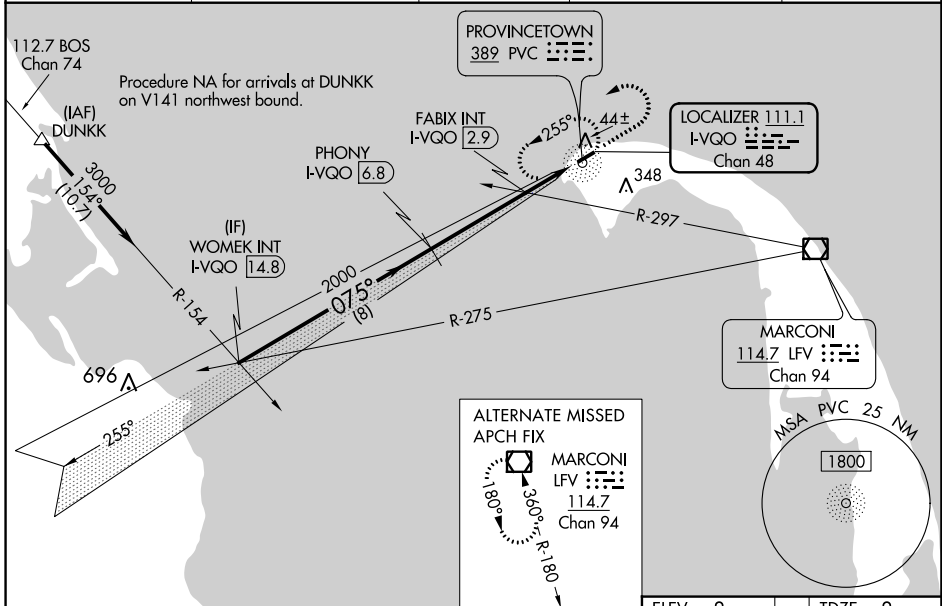
LOC/DME I-VQO 111.1 Chan 48	APP CRS 075°	Rwy Idg 3502 TDZE 8 Apt Elev 8
---	------------------------	---

ILS or LOC RWY 7

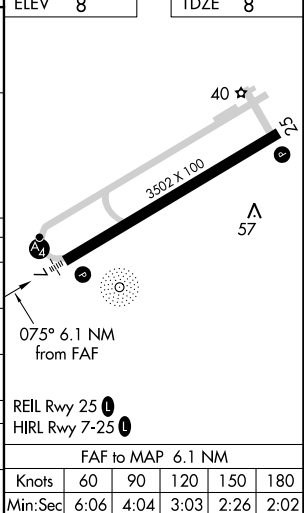
PROVINCETOWN MUNI (PVC)

DME required for LOC only, ADF.		MALSF	MISSED APPROACH: Climb to 800 then climbing left turn to 2000 direct PVC NDB and hold, continue climb-in-hold to 2000.
<p>NA Inop table does not apply to S-ILS 7. When local altimeter setting not received, use Hyannis altimeter setting and increase all DA to 271 and all MDA 80 feet: increase S-LOC 7 and FABIX fix minimums S-LOC 7 all Cats visibility 1/4 SM. VDP NA when using Hyannis altimeter setting. For inop ALS when using Hyannis altimeter setting, increase S-ILS 7 all Cats visibility to 7/8 SM.</p>			

AWOS-3PT 119.275	BOSTON APP CON * 118.2	CLNC DEL 120.65	UNICOM 122.8 (CTAF)	122.85
----------------------------	----------------------------------	---------------------------	-------------------------------	---------------



	WOMEK INT I-VQO (14.8)	PHONY I-VQO (6.8)	FABIX INT I-VQO (2.9)	I-VQO (1.5)	I-VQO (0.7)
	3000	2000	2000	2000	2000
	075°	075°	075°	075°	075°
	8 NM	3.9 NM	1.3 NM	0.9 NM	
	GS 3.00° TCH 40	# 740 using Hyannis altimeter setting.	# 660		
CATEGORY	A	B	C	D	
S-ILS 7	208-3/4	200 (200-3/4)		NA	
S-LOC 7	660-3/4	652 (700-3/4)		NA	
CIRCLING	660-1	652 (700-1)		NA	
FABIX FIX MINIMUMS (DUAL VOR RECEIVERS OR DME REQUIRED)					
S-LOC 7	320-3/4	312 (400-3/4)		NA	
CIRCLING	460-1	660-1		NA	
	452 (500-1)	652 (700-1)			



NE-1, 23 FEB 2023 to 23 MAR 2023

NE-1, 23 FEB 2023 to 23 MAR 2023

FAF to MAP 6.1 NM					
Knots	60	90	120	150	180
Min:Sec	6:06	4:04	3:03	2:26	2:02