

(ZETTR3.ZETTR) 22251

ZETTR THREE DEPARTURE (RNAV)

AL-5293 (FAA)

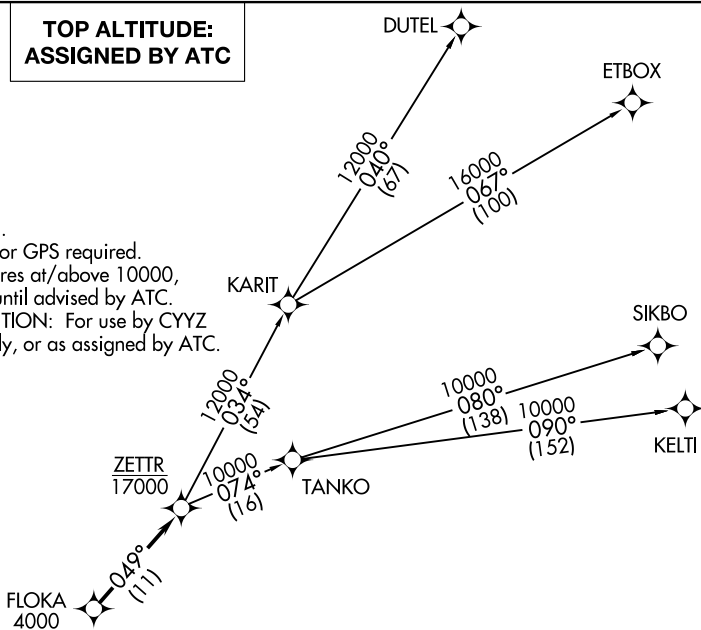
OAKLAND/TROY (VLL)

TROY, MICHIGAN

AWOS-3
119.475
CTAF
123.05
DETROIT DEP CON
132.35 284.0

**TOP ALTITUDE:
ASSIGNED BY ATC**

- NOTE: RNAV 1.
- NOTE: RADAR required.
- NOTE: DME/DME/IRU or GPS required.
- NOTE: Turbojet departures at/above 10000, maintain 280K until advised by ATC.
- NOTE: TANKO TRANSITION: For use by CYYZ area arrivals only, or as assigned by ATC.



TAKEOFF MINIMUMS:

Rwy 9: Standard.

Rwy 27: Standard with minimum climb of 476' per NM to 1500.

DEPARTURE ROUTE DESCRIPTION

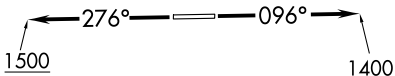
TAKEOFF RUNWAY 9: Climb on heading 096° to 1400 then as assigned for RADAR vectors to cross FLOKA at or above 4000, thence...

TAKEOFF RUNWAY 27: Climb on heading 276° to 1500 then as assigned for RADAR vectors to cross FLOKA at or above 4000, thence...

....on track 049° to cross ZETTR at or below 17000, then on (transition). Maintain ATC assigned altitude, expect filed altitude 10 minutes after departure.

- DUTEL TRANSITION (ZETTR3.DUTEL):
- ETBOX TRANSITION (ZETTR3.ETBOX):
- KELTI TRANSITION (ZETTR3.KELTI):
- SIKBO TRANSITION (ZETTR3.SIKBO):
- TANKO TRANSITION (ZETTR3.TANKO):

NOTE: Chart not to scale.



ZETTR THREE DEPARTURE (RNAV)
(ZETTR3.ZETTR) 05DEC19

TROY, MICHIGAN
OAKLAND/TROY (VLL)

EC-1, 23 FEB 2023 to 23 MAR 2023

EC-1, 23 FEB 2023 to 23 MAR 2023