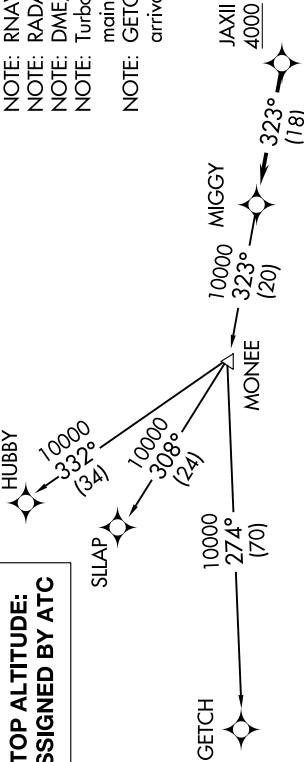


EC-1, 23 FEB 2023 to 23 MAR 2023

**TOP ALTITUDE:
ASSIGNED BY ATC**

AWOS-3
119.475
CTAF
123.05
DETROIT DEP CON
132.35 284.0

- NOTE: RNAV 1.
- NOTE: RADAR required.
- NOTE: DME/DME/IRU or GPS required.
- NOTE: Turbopjet departures at/above 10000, maintain 280K until advised by ATC.
- NOTE: GETCH TRANSITION: For use by KMKE area arrivals only, or as assigned by ATC.



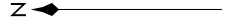
DEPARTURE ROUTE DESCRIPTION

TAKEOFF RUNWAY 9: Climb on heading 096° to 1400 then as assigned for RADAR vectors to cross JAXII at or above 4000, thence....

TAKEOFF RUNWAY 27: Climb on heading 276° to 1500 then as assigned for RADAR vectors to cross JAXII at or above 4000, thence....

.....on track 323° to MIGGY, then on (transition). Maintain ATC assigned altitude, expect filed altitude 10 minutes after departure.

- GETCH TRANSITION (MIGGY2.GETCH):
- HUBBY TRANSITION (MIGGY2.HUBBY):
- SILAP TRANSITION (MIGGY2.SILAP):



TAKEOFF MINIMUMS:

- Rwy 9: Standard.
- Rwy 27: Standard with minimum climb of 476' per NM to 1500.

NOTE: Chart not to scale.

EC-1, 23 FEB 2023 to 23 MAR 2023