

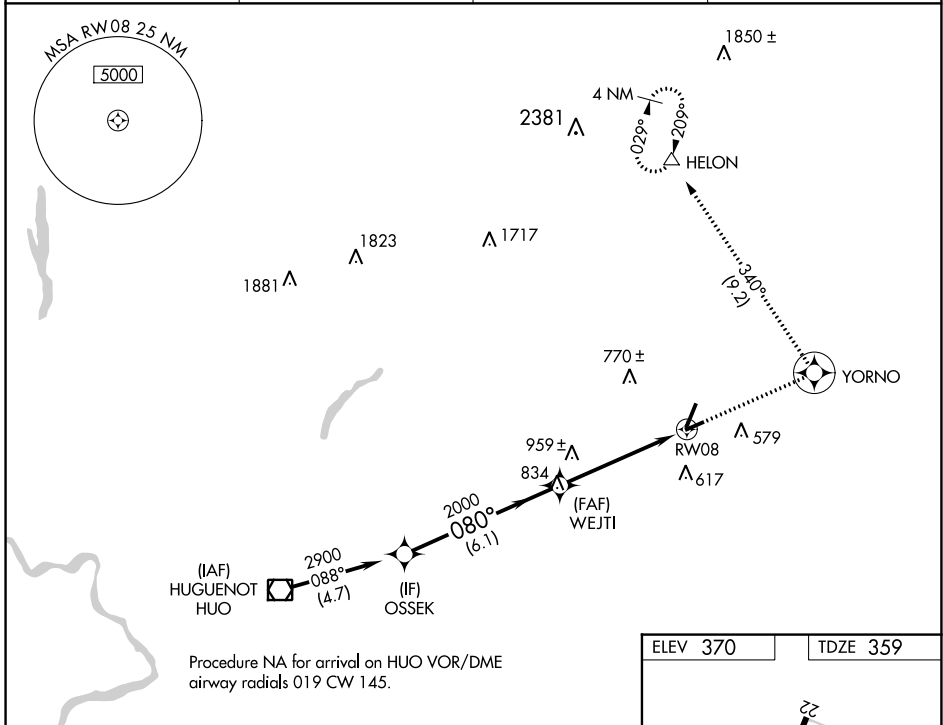
WAAS CH 50216 W08A	APP CRS 080°	Rwy Idg TDZE Apt Elev	3664 359 370
--	------------------------	-----------------------------	---

RNAV (GPS) RWY 8

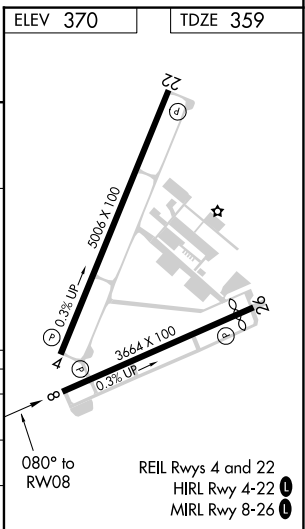
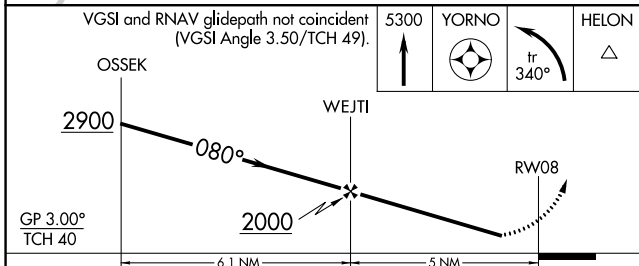
ORANGE COUNTY (MGJ)

RNP APCH.	MISSED APPROACH: Climb to 5300 direct YORNO and left turn on track 340° to HELON and hold, continue climb-in-hold to 5300.
<p>▼ Rwy 8 helicopter visibility reduction below 1 SM NA. Straight-in Rwy 8 NA at night, Circling Rwy 8, 22, 26 NA at night.</p>	

ASOS 119.275	NEW YORK APP CON 132.75 363.1	CLNC DEL 123.85	UNICOM 122.725 (CTAF) 0
------------------------	---	---------------------------	-----------------------------------



Procedure NA for arrival on HUGO VOR/DME airway radials 019 CW 145.



CATEGORY	A	B	C	D
LPV DA	1059-2½		700 (700-2½)	
LNVA MDA	1220-1 861 (900-1)	1220-1¼ 861 (900-1¼)	1220-2½ 861 (900-2½)	1220-2¾ 861 (900-2¾)
CIRCLING	1220-1¼	850 (900-1¼)	1220-2½ 850 (900-2½)	1220-2¾ 850 (900-2¾)

NE-2, 23 FEB 2023 to 23 MAR 2023

NE-2, 23 FEB 2023 to 23 MAR 2023