

WAAS CH <b>40208</b> <b>W35A</b>	APP CRS <b>355°</b>	Rwy Idg <b>8006</b> TDZE <b>163</b> Apt Elev <b>214</b>
--	------------------------	---

# RNAV (GPS) RWY 35

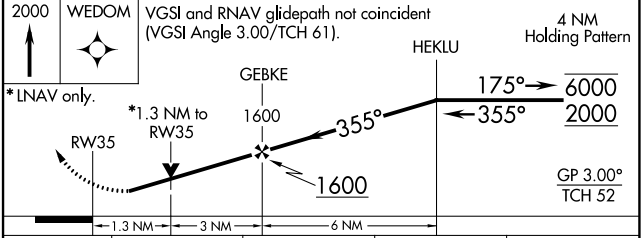
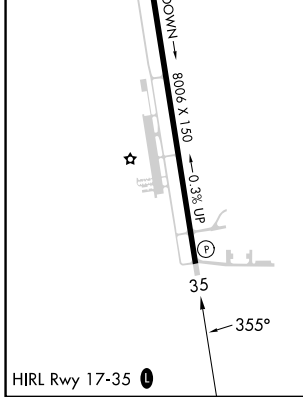
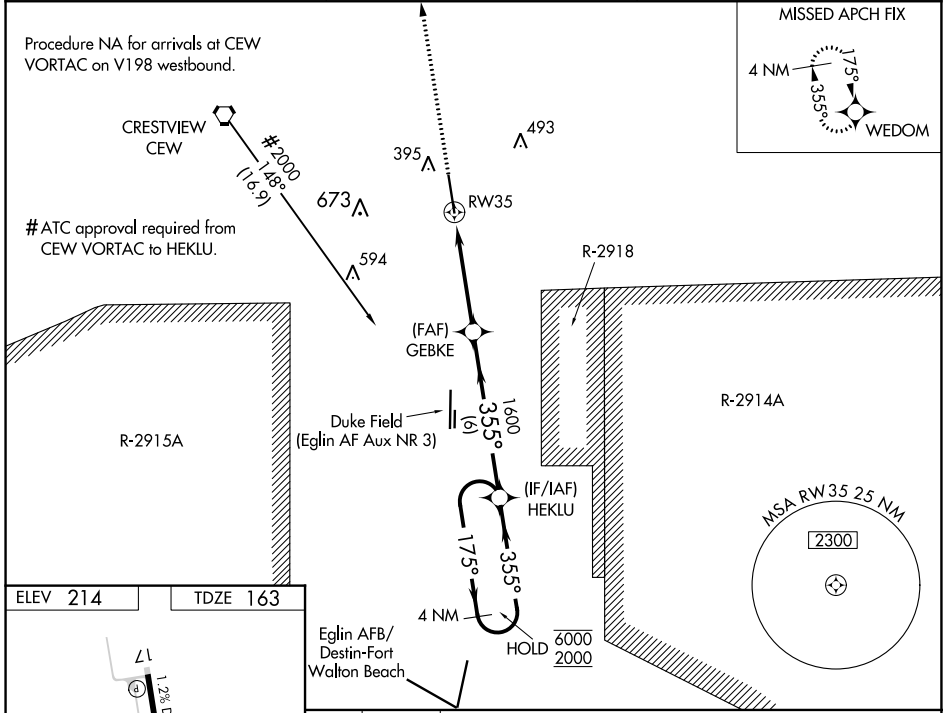
BOB SIKES (CEW)

RNP APCH.

Baro-VNAV and VDP NA when using Eglin AFB altimeter setting. Rwy 35 helicopter visibility reduction below  $\frac{3}{4}$  SM NA. For uncompensated Baro-VNAV systems, LNAV/VNAV NA below -5°C or above 54°C. When local altimeter setting not received, use Eglin AFB altimeter setting and increase LPV DA to 509, LNAV/VNAV DA to 550, and all MDA 60 feet, increase LNAV Cat C/D visibility  $\frac{1}{2}$  SM.

MISSED APPROACH: Climb to 2000 direct WEDOM and hold.

ASOS <b>119.275</b>	EGLIN APP CON <b>124.05 284.65</b>	UNICOM <b>122.95 (CTAF)</b>
------------------------	---------------------------------------	--------------------------------



CATEGORY	A	B	C	D
LPV DA	450-1 287 (300-1)			
LNAV/VNAV DA	491-1 $\frac{1}{4}$ 328 (300-1 $\frac{1}{4}$ )			
LNAV MDA	640-1 477 (500-1)		640-1 $\frac{3}{8}$ 477 (500-1 $\frac{3}{8}$ )	

SE-3, 23 FEB 2023 to 23 MAR 2023

SE-3, 23 FEB 2023 to 23 MAR 2023