

VORTAC IRQ 113.9 Chan 86	APP CRS 102°	Rwy Idg TDZE Apt Elev	N/A N/A 529
--	------------------------	-----------------------------	--

VOR/DME-A

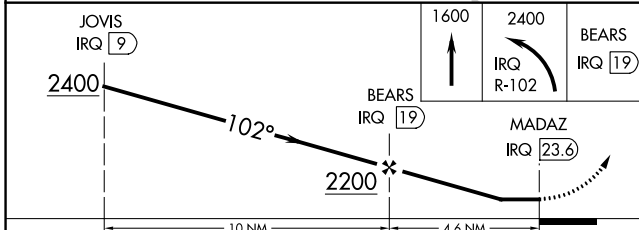
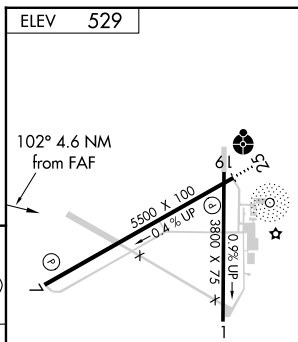
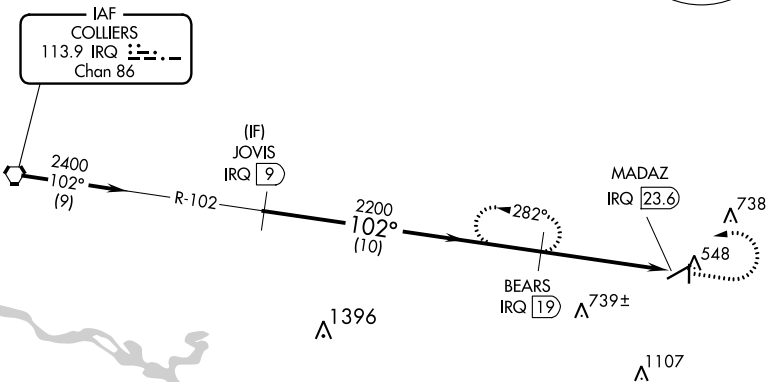
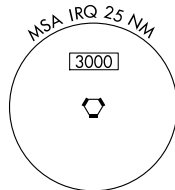
AIKEN RGNL (AIK)

NA When local altimeter setting not received, use Augusta Rgnl at Bush Fld altimeter setting and increase all MDAs 120 feet and increase Cat C visibility ¼ SM.

MISSED APPROACH: Climb to 1600 then climbing left turn to 2400 on IRQ VORTAC R-102 to BEARS/IRQ 19 DME and hold.

AWOS-3 118.025	AUGUSTA APP CON * 119.15 284.625	CLNC DEL 126.075	UNICOM 122.8 (CTAF) 0
--------------------------	--	----------------------------	--

Procedure NA for arrivals at IRQ VORTAC on airway radials 062 CW 154.



CATEGORY	A	B	C	D
CIRCLING	980-1 451 (500-1)	1000-1¼ 471 (500-1¼)	1140-1¾ 611 (700-1¾)	1420-3 891 (900-3)

REIL Rwy 25
MIRL Rwy 7-25 **0**

SE-2, 23 FEB 2023 to 23 MAR 2023

SE-2, 23 FEB 2023 to 23 MAR 2023