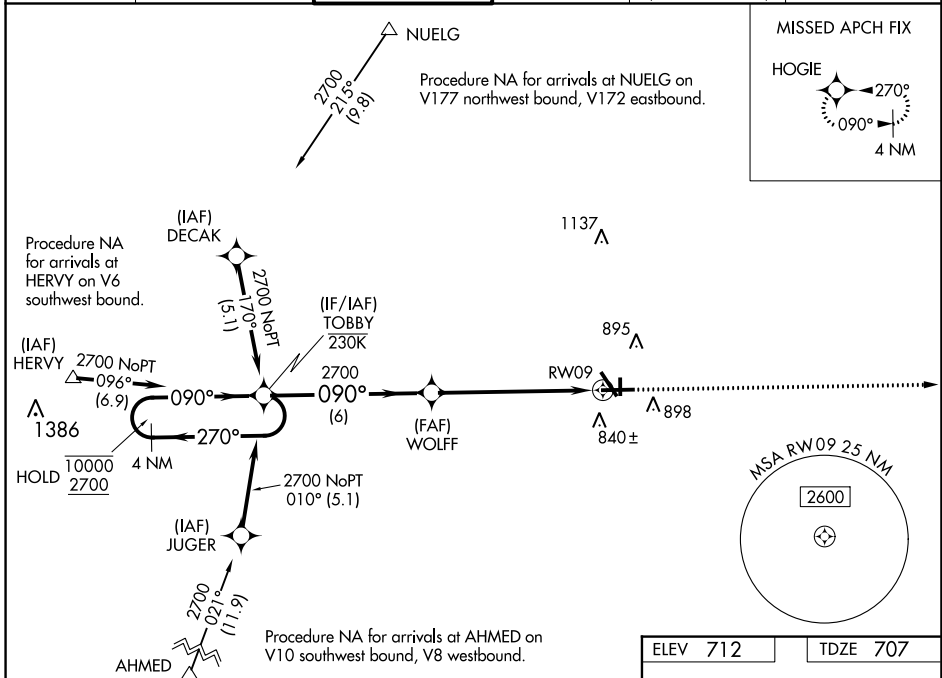


WAAS CH <b>45522</b> <b>W09A</b>	APP CRS <b>090°</b>	Rwy Idg <b>6501</b> TDZE <b>707</b> Apt Elev <b>712</b>
--	------------------------	---

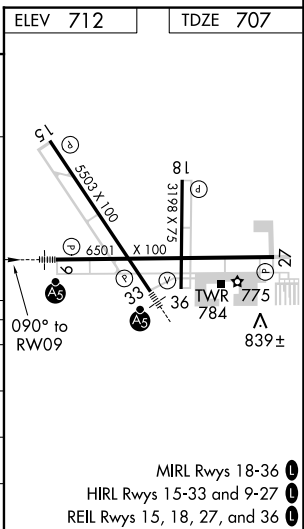
# RNAV (GPS) RWY 9

AURORA MUNI (A.R.)

RNP APCH - GPS.				MALSRL	MISSED APPROACH: Climb to 2500 direct HOGIE and hold.
<p>▼ For uncompensated Baro-VNAV systems, LNAV/VNAV NA below -20°C or above 54°C. For inop APCH, increase LNAV Cat C/D visibility to 1½ SM.</p>					
ATIS <b>125.85</b>	CHICAGO APP CON <b>133.5 349.0</b>	AURORA TOWER* <b>120.6</b> (CTAF) <b>0</b>	GND CON <b>121.7</b>	CLNC DEL <b>121.7</b> (When tower closed)	UNICOM <b>122.95 123.5</b>



4 NM Holding Pattern		TOBBY	WOLFF	2500	HOGIE
10000 2700		090°		↑	
GP 3.00° TCH 45		*1.5 NM to RW09		*LNAV only.	
CATEGORY	A	B	C	D	
LPV DA		957-½	250 (300-½)		
LNAV/VNAV DA		1035-½	328 (400-½)		
LNAV MDA	1220-½	513 (600-½)	1220-1	513 (600-1)	
CIRCLING	1220-1	508 (600-1)	1300-1½ 588 (600-1½)	1320-2 608 (700-2)	



EC-3, 23 FEB 2023 to 23 MAR 2023

EC-3, 23 FEB 2023 to 23 MAR 2023