

VORTAC PSK 116.8 Chan 115	APP CRS 031°	Rwy Idg 6201 TDZE 2105 Apt Elev 2105
---	------------------------	---

VOR/DME RWY 6

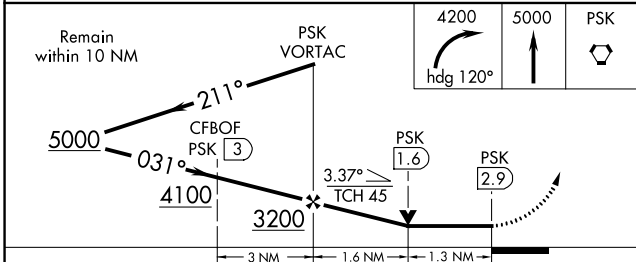
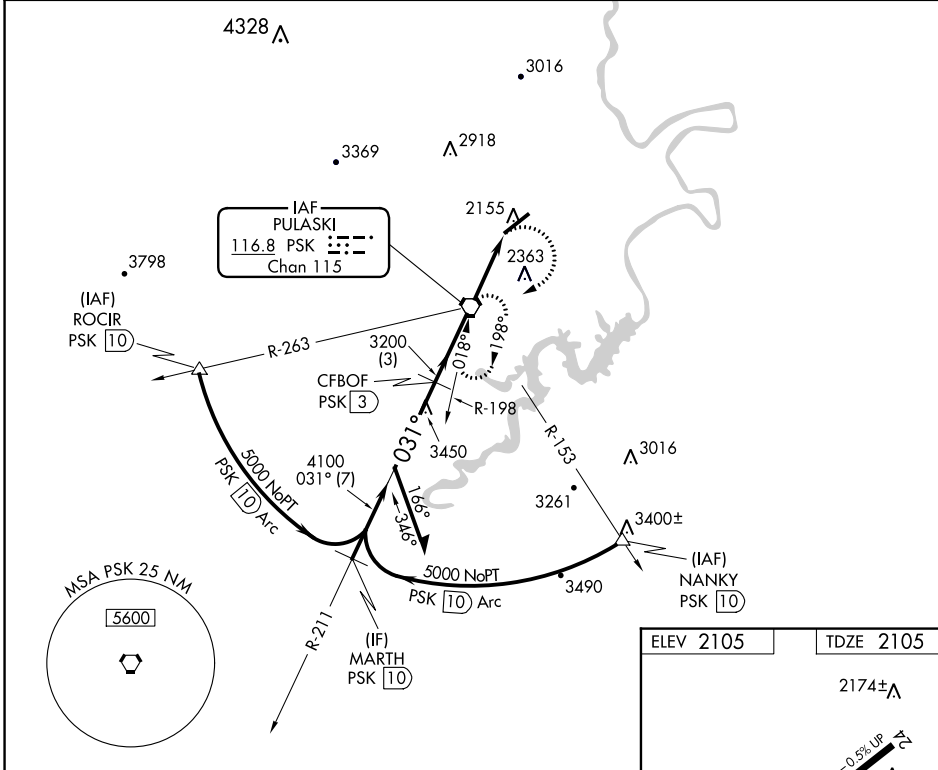
NEW RIVER VALLEY (PSK)

⚠ Inoperative table does not apply. Visibility reduction by helicopters NA.
⚠ When local altimeter setting not received, use Blacksburg altimeter setting and increase all MDA 40 feet. VDP NA when using Blacksburg altimeter setting. Circling NA for Cat D northwest of Rwy 6-24.

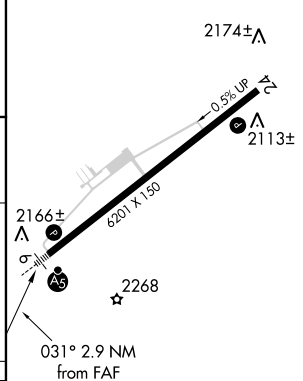


MISSED APPROACH: Climbing right turn to 4200 via heading 120° then climb to 5000 direct PSK VORTAC and hold.

AWOS-3 127.375	ROANOKE APP CON 126.0 339.8	ROANOKE CLNC DEL 121.7	UNICOM 122.7 (CTAF) 0
--------------------------	---------------------------------------	----------------------------------	---------------------------------



ELEV 2105	TDZE 2105
-----------	-----------



CATEGORY	A	B	C	D
S-6	2620-1 515 (600-1)	2620-1½ 515 (600-1½)	2620-1¾ 515 (600-1¾)	2620-2 515 (600-2)
CIRCLING	2620-1 515 (600-1)	2680-1 575 (600-1)	2780-2 675 (700-2)	2780-2¼ 675 (700-2¼)

HIRL Rwy 6-24 0
 REIL Rwy 24 0

NE-3, 23 FEB 2023 to 23 MAR 2023

NE-3, 23 FEB 2023 to 23 MAR 2023