

DUBLIN, VIRGINIA

AL-5084 (FAA)

21056

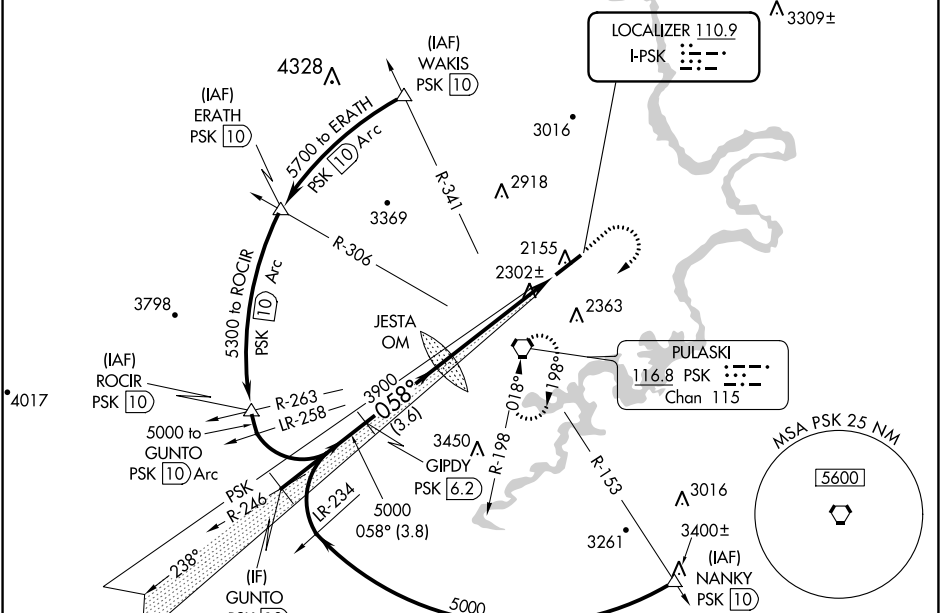
LOC I-PSK <b>110.9</b>	APP CRS <b>058°</b>	Rwy Idg TDZE Apt Elev	<b>6201</b> <b>2105</b> <b>2105</b>
---------------------------	------------------------	-----------------------------	---

# ILS or LOC Y RWY 6

NEW RIVER VALLEY (PSK)

DME required.		MALSR 	MISSED APPROACH: Climb to 3000 then climbing right turn to 5000 direct PSK VORTAC and hold, continue climb-in-hold to 5000.
NA Circling NA for Cat D northwest of Rwy 6-24. Inop table does not apply to S-ILS 6 all Cats and S-LOC 6 Cats A and B. For inop ALS, increase S-LOC 6 Cat C/D visibility to 1 3/8 SM.			

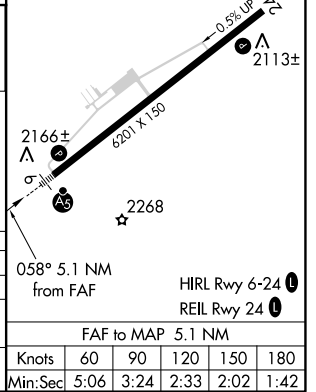
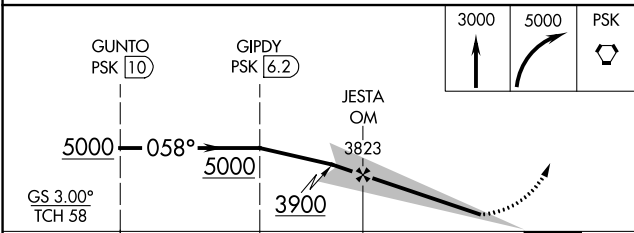
AWOS-3 <b>127.375</b>	ROANOKE APP CON <b>126.0 339.8</b>	ROANOKE CLNC DEL <b>121.7</b>	UNICOM <b>122.7 (CTAF)</b>
--------------------------	---------------------------------------	----------------------------------	-------------------------------



NE-3, 23 FEB 2023 to 23 MAR 2023

NE-3, 23 FEB 2023 to 23 MAR 2023

ELEV 2105	TDZE 2105
-----------	-----------



CATEGORY	A	B	C	D
S-ILS 6		2305-1	200 (200-1)	
S-LOC 6		2560-1	455 (500-1)	
CIRCLING	2620-1 515 (600-1)	2680-1 575 (600-1)	2780-2 675 (700-2)	2780-2 1/4 675 (700-2 1/4)
	Knots Min:Sec	60 5:06	90 3:24	120 2:33
		150 2:02	180 1:42	

DUBLIN, VIRGINIA

37°08'N-80°41'W

Orig-B 25FEB21

# NEW RIVER VALLEY (PSK)

## ILS or LOC Y RWY 6