

LOC/DME I-RUT <b>111.7</b> Chan <b>54</b>	APP CRS <b>194°</b>	Rwy ldg <b>5003</b> TDZE <b>787</b> Apt Elev <b>787</b>
---	------------------------	---

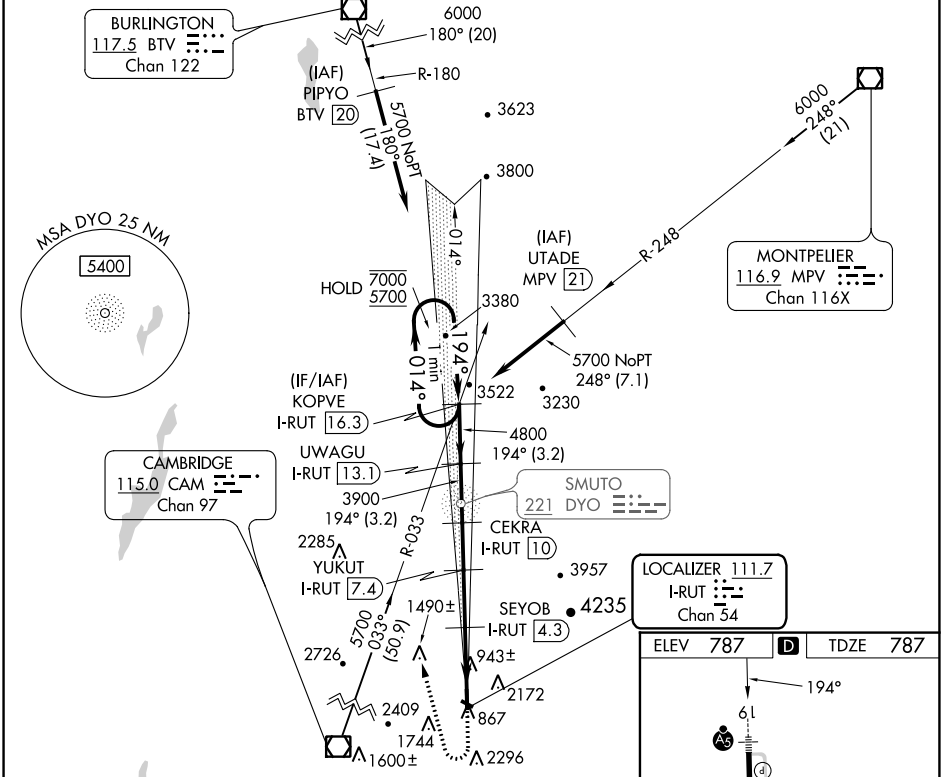
# ILS Z or LOC Z RWY 19

RUTLAND/SOUTHERN VERMONT RGNL (RUT)

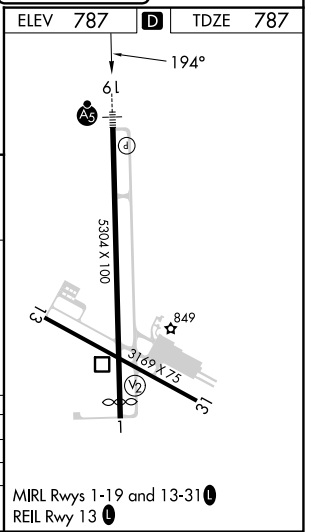
**DME required.**

**MALS R** MISSED APPROACH: Climb to 1900 then climbing right turn to 5700 on heading 360° and CAM VOR/DME R-033 to KOPVE/I-RUT 16.3 DME and hold. If unable to meet climb gradient, see ILS Y or LOC Y Rwy 19. # Missed approach requires minimum climb of 425 feet per NM to 3200.

AWOS-3PT <b>118.375</b>	BOSTON CENTER <b>135.7 282.2</b>	UNICOM <b>122.8 (CTAF) 0</b>
----------------------------	-------------------------------------	---------------------------------



One Minute Holding Pattern	1900	5700	CAM R-033	KOPVE I-RUT 16.3
KOPVE I-RUT 16.3	UWAGU I-RUT 13.1	CEKRA I-RUT 10	YUKUT I-RUT 7.4	SEYOB I-RUT 4.3
7000 ← 014°	5700 → 194°	4800 → 194°	3900 → 194°	3040 → 194°
GS 3.20°	TCH 54			
	3.2 NM	3.2 NM	2.5 NM	3.1 NM
			1.4 NM	2 NM
CATEGORY	A	B	C	D
S-ILS 19 #	1451-1½ 664 (700-1½)			
S-LOC 19 #	1520-1½ 733 (800-1½) 1520-1½ 733 (800-1½)			
CIRCLING	2160-1¼ 1373 (1400-1¼)	2160-1½ 1373 (1400-1½)	2520-3 1733 (1800-3)	2760-3 1973 (2000-3)



NE-1, 23 FEB 2023 to 23 MAR 2023

NE-1, 23 FEB 2023 to 23 MAR 2023