

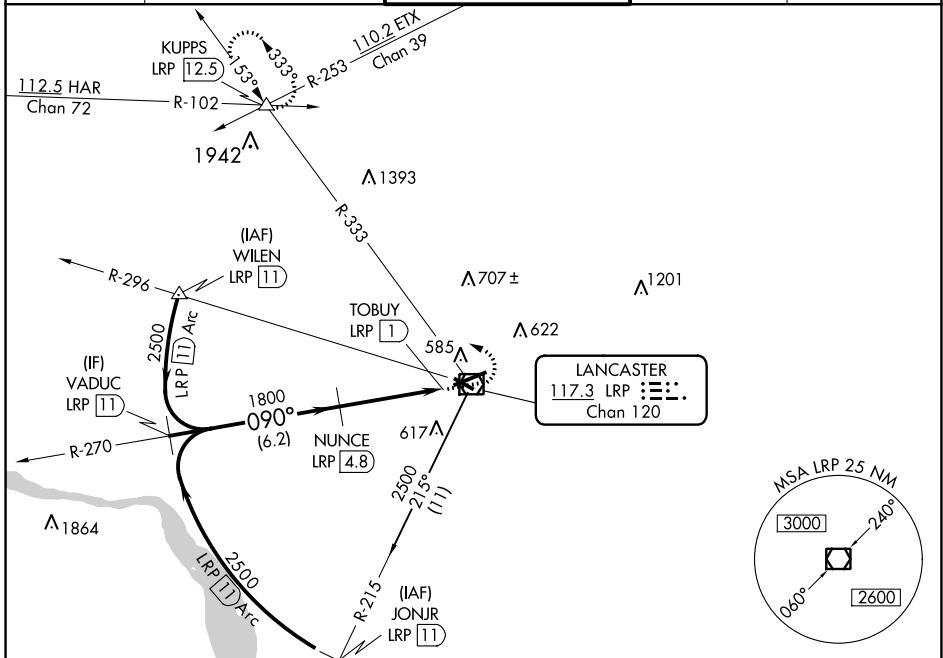
VOR/DME LRP <b>117.3</b> Chan <b>120</b>	APP CRS <b>090°</b>	Rwy Idg <b>6118</b> TDZE <b>399</b> Apt Elev <b>403</b>
--	------------------------	---

# VOR/DME RWY 8

LANCASTER (LNS)

<p><b>⚠</b> Circling Rwy 13, 31 NA at night. Inop table does not apply.  <b>⚠</b> When local altimeter setting not received, use Harrisburg Intl altimeter setting and increase all MDA 80 feet, and S-8 and Circling Cats C and D visibility ¼ mile.</p>	<p>MALSR  </p>	<p>MISSED APPROACH: Climb to 1200 then climbing left turn to 3000 via LRP VOR/DME R-333 to KUPPS INT/LRP 12.5 DME and hold.</p>
---	--------------------	---

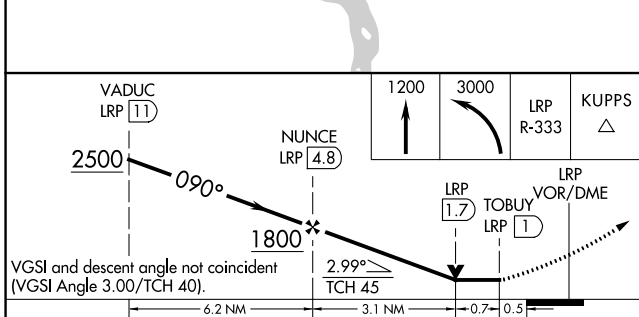
ATIS <b>125.675</b>	HARRISBURG APP CON <b>126.45 281.525</b>	LANCASTER TOWER★ <b>120.9 (CTAF) 251.1</b>	GND CON <b>121.8</b>	UNICOM <b>122.95</b>
------------------------	---	---	-------------------------	-------------------------



NE-4, 23 FEB 2023 to 23 MAR 2023

NE-4, 23 FEB 2023 to 23 MAR 2023

ELEV 403	<b>D</b>	TDZE 399
----------	----------	----------



CATEGORY	A	B	C	D
S-8	820-1 421 (500-1)		820-1¼ 421 (500-1¼)	
CIRCLING	940-1 537 (600-1)		960-1½ 557 (600-1½)	1060-2 657 (700-2)

