

| | | | |
|--|------------------------|---|-------------|
| WAAS CH 77915 W08A | APP CRS 077° | Rwy Idg TDZE 399 Apt Elev 403 | 6118 |
|--|------------------------|---|-------------|

RNAV (GPS) RWY 8

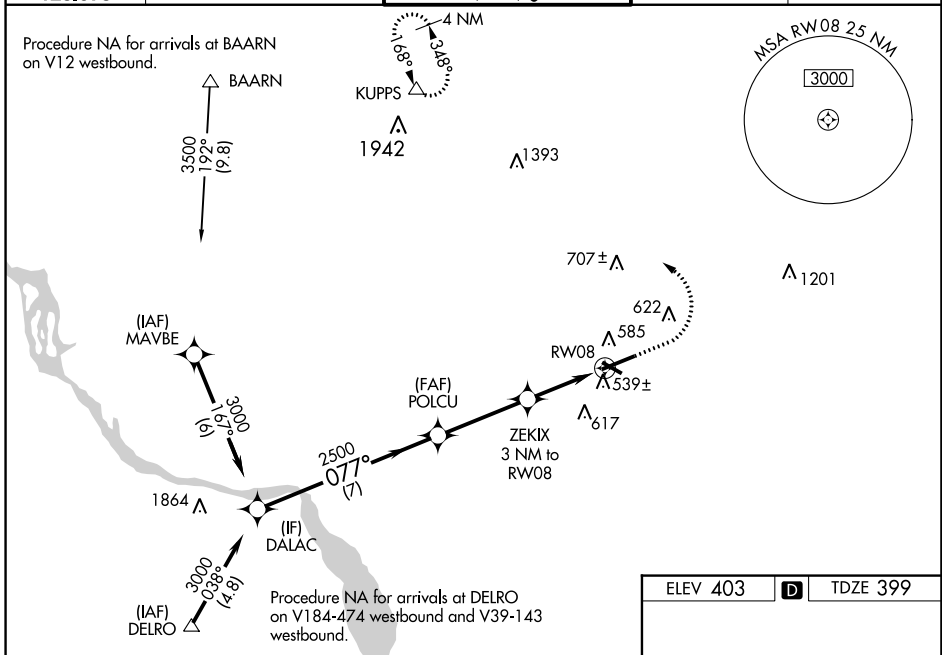
LANCASTER (LNS)

For uncompensated Baro-VNAV systems, LNAV/VNAV NA below -15°C (5°F) or above 54°C (130°F). DME/DME RNP-0.3 NA. When local altimeter setting not received, use Harrisburg Intl altimeter setting and increase all DA 64 feet and all MDA 80 feet, increase LNAV/VNAV all Cats visibility ¼ mile, LNAV and Circling Cats C and D visibility ¼ mile. Baro-VNAV and VDP NA when using Harrisburg Intl altimeter setting. Night landing: Rwy 13, 31 NA. For inoperative MALS increase LNAV/VNAV all Cats visibility to 1 ¼ mile, and LNAV Cats C/D visibility to 1 ½ mile. For inoperative MALS when using Harrisburg Intl altimeter setting, increase LPV all Cats visibility to ¾ mile, LNAV/VNAV all Cats visibility to 1 ½ mile and LNAV Cats C/D visibility to 1 ¾ mile.

MALS

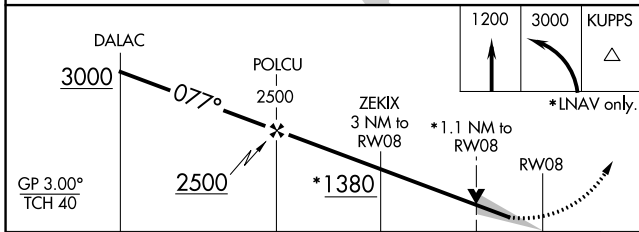
MISSED APPROACH:
Climb to 1200 then climbing left turn to 3000 direct KUPPS and hold.

| | | | | |
|------------------------|---|---|-------------------------|-------------------------|
| ATIS 125.675 | HARRISBURG APP CON 126.45 281.525 | LANCASTER TOWER ★ 120.9 (CTAF) 251.1 | GND CON 121.8 | UNICOM 122.95 |
|------------------------|---|---|-------------------------|-------------------------|



NE-4, 23 FEB 2023 to 23 MAR 2023

NE-4, 23 FEB 2023 to 23 MAR 2023



| CATEGORY | A | B | C | D |
|--------------|-------|-------------|--------------|-------------|
| LPV DA | 599-½ | | 200 (200-½) | |
| LNAV/VNAV DA | 784-⅞ | | 385 (400-⅞) | |
| LNAV MDA | 800-½ | 401 (400-½) | 800-¾ | 401 (400-¾) |
| CIRCLING | 940-1 | 537 (600-1) | 960-1½ | 1060-2 |
| | | | 557 (600-1½) | 657 (700-2) |

ELEV 403 **D** TDZE 399

TWR 476

6933 X 150

4102 X 100

0.3% UP

077° to RW08

REIL Rwy 31 ●
HIRL Rwy 8-26 ●
MIRL Rwy 13-31 ●