

WAAS CH 56315 W34A	APP CRS 337°	Rwy Idg TDZE Apt Elev	7203 796 799
--	------------------------	-----------------------------	---

RNAV (GPS) RWY 34

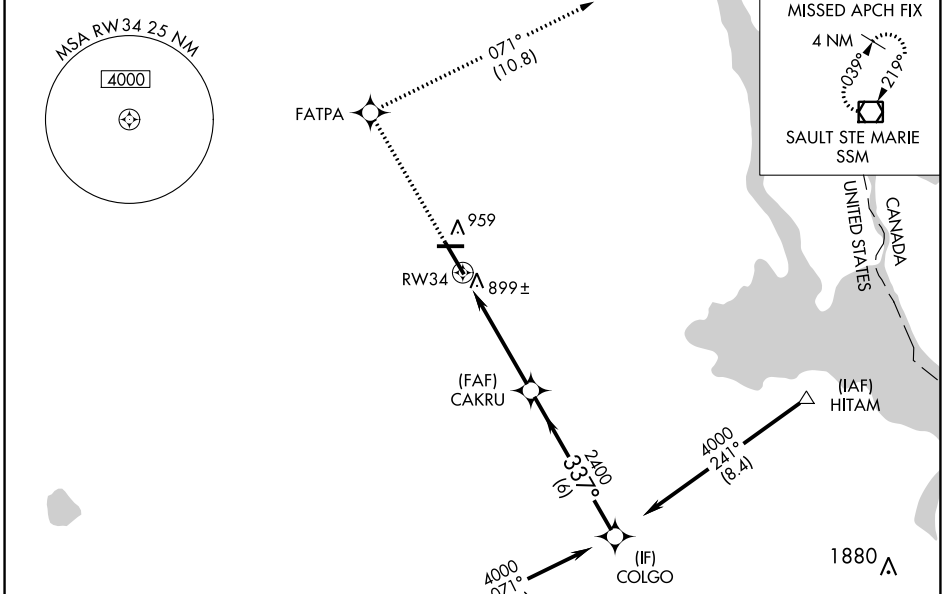
CHIPPEWA COUNTY INTL (CIU)

RNP APCH.

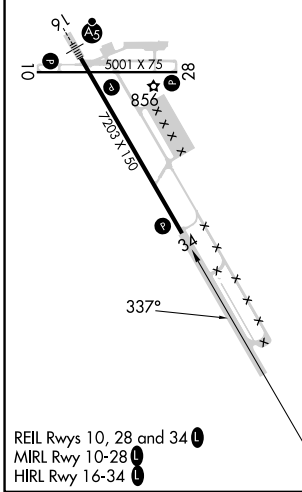
▼ For uncompensated Baro-VNAV systems, LNAV/VNAV NA below -16°C or above 54°C.
 ▲ When local altimeter setting not received, use Sault Ste Marie Muni/Sanderson Fld altimeter setting; increase LPV DA to 1091 feet, LNAV/VNAV DA to 1243 feet and all MDA 60 feet; increase LNAV Cat D visibility ¼ SM. Baro-VNAV and VDP NA when using Sault Ste Marie Muni/Sanderson Fld altimeter setting.

MISSED APPROACH:
 Climb to 3000 direct FATPA and track 071° to SSM VOR/DME and hold.

AWOS-3PT 127.575	TORONTO CENTER 132.65 344.5	UNICOM 123.0 (CTAF)
----------------------------	---------------------------------------	-------------------------------



ELEV 799	D	TDZE 796
----------	----------	----------



Procedure NA for arrival at PINES via V193 southbound.

COLGO	CAKRU	3000	FATPA	tr 071°	SSM
4000	2400				
GP 3.00° TCH 40	337°	*1.2 NM to RW34			*LNAV only.
	2400				
	6 NM	3.7 NM	1.2 NM		
CATEGORY	A	B	C	D	
LPV DA		1046-1	250 (300-1)		
LNAV/DA VNAV		1198-1½	402 (400-1½)		
LNAV MDA	1200-1	404 (500-1)	1200-1¼	404 (500-1¼)	
C CIRCLING	1260-1	461 (500-1)	1260-1½	1360-2	561 (600-2)

EC-1, 23 FEB 2023 to 23 MAR 2023

EC-1, 23 FEB 2023 to 23 MAR 2023