



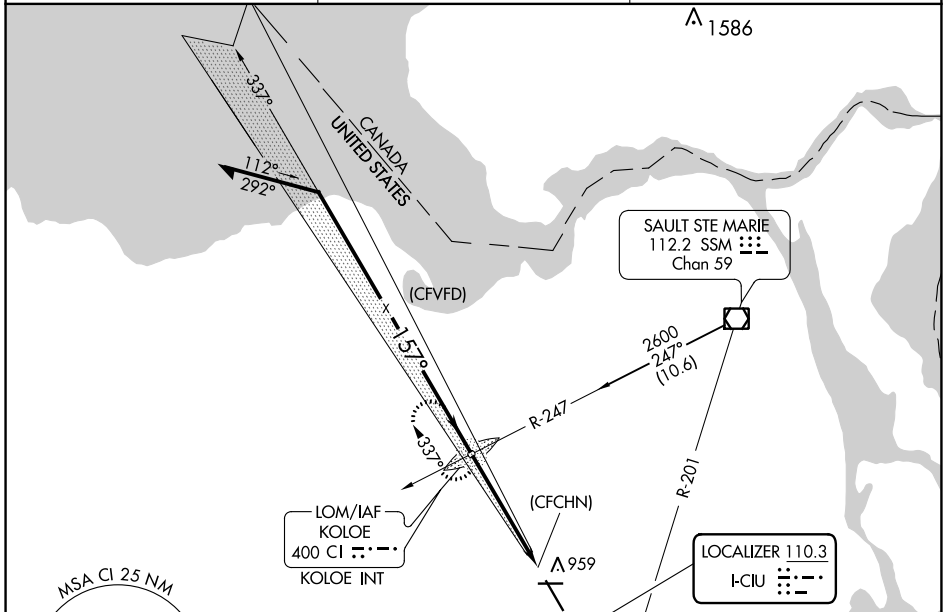
LOC I-CIU <b>110.3</b>	APP CRS <b>157°</b>	Rwy Idg <b>7203</b>
		TDZE <b>799</b>
		Apt Elev <b>799</b>

# ILS or LOC RWY 16

CHIPPEWA COUNTY INTL (CIU)

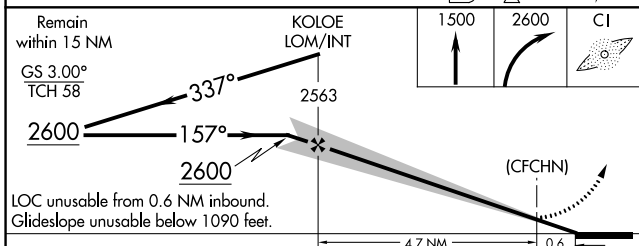
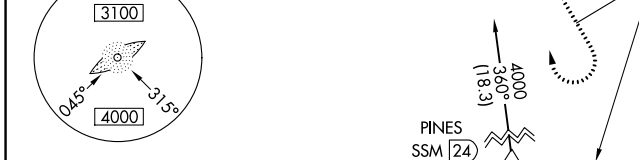
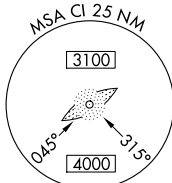
ADF required.	MALSR 	MISSED APPROACH: Climb to 1500 then climbing right turn to 2600 direct KOLOE LOM/INT and hold. (TACAN aircraft climb to 5000 on heading 160° and SSM VOR/DME R-201 to PINES/SSM 24 DME and hold south, right turn, 021° inbound.)
 Autopilot coupled approach NA below 1380.		


AWOS-3PT <b>127.575</b>	TORONTO CENTER <b>132.65 344.5</b>	UNICOM <b>123.0 (CTAF) 0</b>
----------------------------	---------------------------------------	---------------------------------

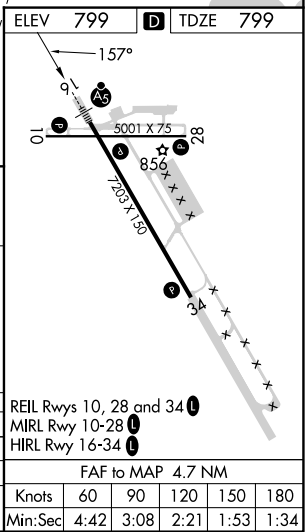


EC-1, 23 FEB 2023 to 23 MAR 2023

EC-1, 23 FEB 2023 to 23 MAR 2023



CATEGORY	A	B	C	D	E
S-ILS 16	1090-1/2 291 (300-1/2)				
S-LOC 16	1160-1/2	361 (400-1/2)	1160-5/8	361 (400-5/8)	
 CIRCLING	1260-1	461 (500-1)	1260-1 1/2	1360-2	1380-2
			461 (500-1 1/2)	561 (600-2)	581 (600-2)



	Knots	60	90	120	150	180
	Min:Sec	4:42	3:08	2:21	1:53	1:34