

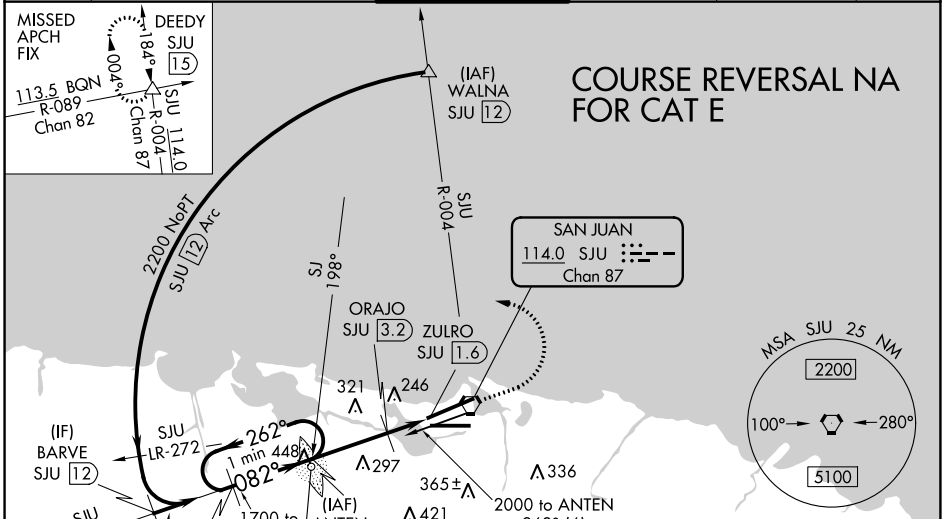
VORTAC SJU <b>114.0</b> Chan <b>87</b>	APP CRS <b>082°</b>	Rwy Idg TDZE <b>10</b> Apt Elev <b>10</b>	<b>8016</b>
--	------------------------	---	-------------

# VOR or TACAN RWY 10

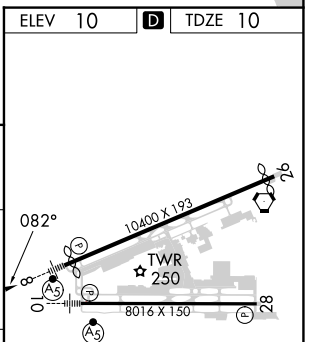
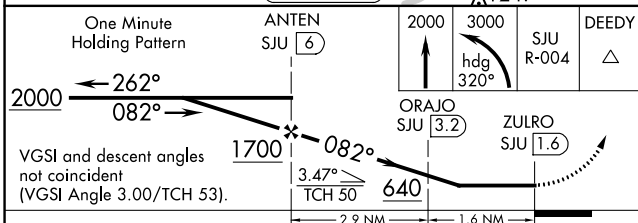
LUIS MUNOZ MARIN INTL (SJU)(TJSJ)

ADF or DME required.	MALS R 	MISSED APPROACH: Climb to 2000 then climbing left turn to 3000 on heading 320° and SJU VORTAC R-004 to DEEDY INT/15 DME and hold.
⚠ Straight-in Rwy 10 NA at night, operational VGSi required, remain on or above VGSi glidepath until threshold. Circling NA for Cat E south of Rwy 10-28. Inop table does not apply to S-10 Cats A, B and ORAJO fix minimums S-10 Cats A, B. For inop ALS, increase S-10 Cats C/D/E visibility to 1¼ SM; increase ORAJO fix minimums S-10 Cats C/D/E visibility to 1¼ SM. Rwy 10 helicopter visibility reduction below 1 SM NA.		

D-ATIS <b>125.8</b>	SAN JUAN APP CON <b>119.4 269.2</b> (WEST & SW) <b>120.9 290.2</b> (NORTH & EAST)	SAN JUAN TOWER <b>132.05 257.8</b>	GND CON <b>121.9 348.6</b>	CLNC DEL <b>126.4 284.6</b>	CPDLC
------------------------	---	---------------------------------------	-------------------------------	--------------------------------	-------



ELEV 10	<b>D</b> TDZE 10
---------	------------------



CATEGORY	A	B	C	D	E
S-10	640-1	630 (700-1)	640-1 <sup>3</sup> / <sub>8</sub>	630 (700-1 <sup>3</sup> / <sub>8</sub> )	
CIRCLING	640-1	630 (700-1)	740-2 730 (800-2)	920-3	910 (1000-3)
ORAJO FIX MINIMUMS (DME REQUIRED)					
S-10	500-1 490 (500-1)				
CIRCLING	600-1	590 (600-1)	740-2 730 (800-2)	920-3	910 (1000-3)

REIL Rwy 26					
HIRL Rwy 8-26 and 10-28					
FAF to MAP 4.5 NM					
Knots	60	90	120	150	180
Min:Seq	4:30	3:00	2:15	1:48	1:30

SE-3, 23 FEB 2023 to 23 MAR 2023

SE-3, 23 FEB 2023 to 23 MAR 2023