

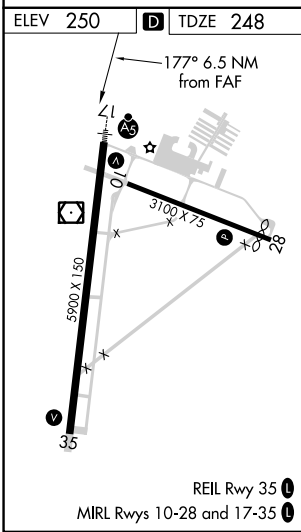
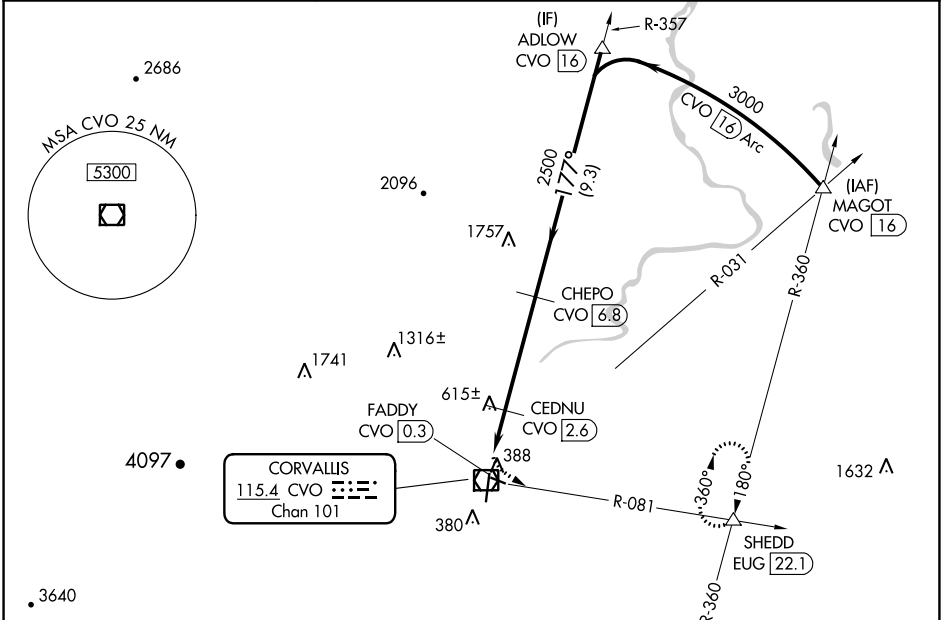
VOR/DME CVO <b>115.4</b> Chan <b>101</b>	APP CRS <b>177°</b>	Rwy Idg TDZE Apt Elev	<b>5900</b> <b>248</b> <b>250</b>
--	------------------------	-----------------------------	---

# VOR RWY 17

CORVALLIS MUNI (CVO)

DME required.	MALSRS 	MISSED APPROACH: Climbing left turn to 3000 on CVO VOR/DME R-081 to SHEDD INT/EUG 22.1 DME and hold, continue climb-in-hold to 3000.
<p><b>▼</b> Circling Rwy 28 NA at night. When local altimeter setting not received, procedure NA. For inop ALS, increase S-17 Cat C/D visibility to 1 3/4 SM.</p> <p><b>▲</b></p>		

AWOS-3PT <b>135.775</b>	CASCADE APP CON * <b>127.5 348.7</b>	UNICOM <b>123.075 (CTAF)</b>
----------------------------	---	---------------------------------



3000 CVO R-081	SHEDD △	VGSI and descent angles not coincident (VGSI Angle 3.00/TCH 45).	ADLOW CVO 16
CVO VOR/DME FADDY CVO 0.3	CEDNU CVO 2.6	CHEPO CVO 6.8	
1100	2500	3000	
1.8 NM	0.6	4.1 NM	9.3 NM

CATEGORY	A	B	C	D
S-17	880-1/2	632 (700-1/2)	880-1 3/8	632 (700-1 3/8)
<b>CIRCLING</b>	880-1	630 (700-1)	920-1 3/4 670 (700-1 3/4)	1080-2 3/4 830 (900-2 3/4)

NW-1, 23 FEB 2023 to 23 MAR 2023

NW-1, 23 FEB 2023 to 23 MAR 2023