

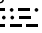
(SHEDD4.SHEDD) 21336
SHEDD FOUR DEPARTURE

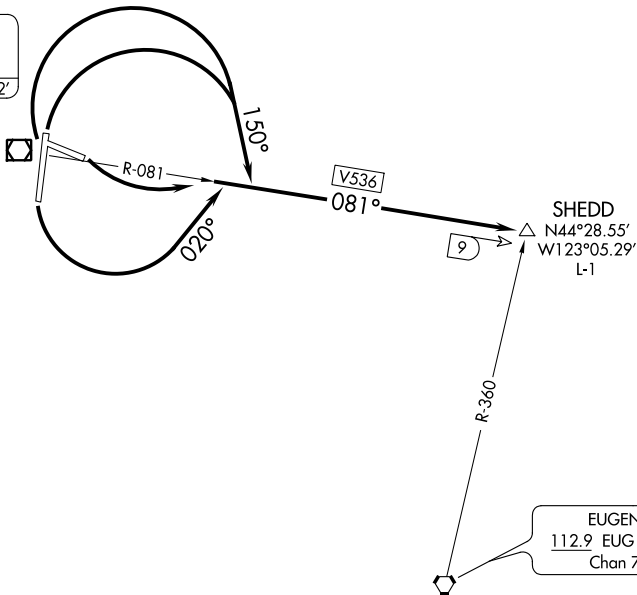
AL-782 (FAA)

CORVALLIS MUNI (CVO)
 CORVALLIS, OREGON

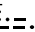
**TOP ALTITUDE:
 3000**

AWOS-3PT
 135.775
 CASCADE DEP CON*
 127.5 348.7
 SEATTLE CENTER
 125.8 291.7
 CTAF
 123.075

CORVALLIS
 115.4 CVO 
 Chan 101
 N44°29.97'-W123°17.62'



SHEDD
 N44°28.55'
 W123°05.29'
 L-1

EUGENE
 112.9 EUG 
 Chan 76

NW-1, 23 FEB 2023 to 23 MAR 2023

NW-1, 23 FEB 2023 to 23 MAR 2023

TAKEOFF MINIMUMS

Rwys 10, 17: Standard.

Rwy 28: Standard with minimum climb of 329' per NM to 3000.

Rwy 35: 400-2¾ or standard with minimum climb of 211' per NM to 800.

NOTE: Chart not to scale.



DEPARTURE ROUTE DESCRIPTION

TAKEOFF RUNWAY 10: Climbing left turn to 3000 on CVO R-081 to SHEDD INT, thence. . . .

TAKEOFF RUNWAY 17: Climbing left turn to 3000 heading 020° and on CVO R-081 to SHEDD INT, thence. . . .

TAKEOFF RUNWAYS 28, 35: Climbing right turn to 3000 heading 150° and on CVO R-081 to SHEDD INT, thence. . . .

. . . .on assigned route of flight.

LOST COMMUNICATIONS

If not in contact with air traffic control upon reaching 3000, continue climb to assigned altitude direct CVO VOR/DME. Thence on assigned route of flight.

SHEDD FOUR DEPARTURE
 (SHEDD4.SHEDD) 02DEC21

CORVALLIS, OREGON
 CORVALLIS MUNI (CVO)