

LOC I-CVO 111.9	APP CRS 172°	Rwy ldg 5900
		TDZE 248
		Apt Elev 250

ILS or LOC RWY 17

CORVALLIS MUNI (CVO)

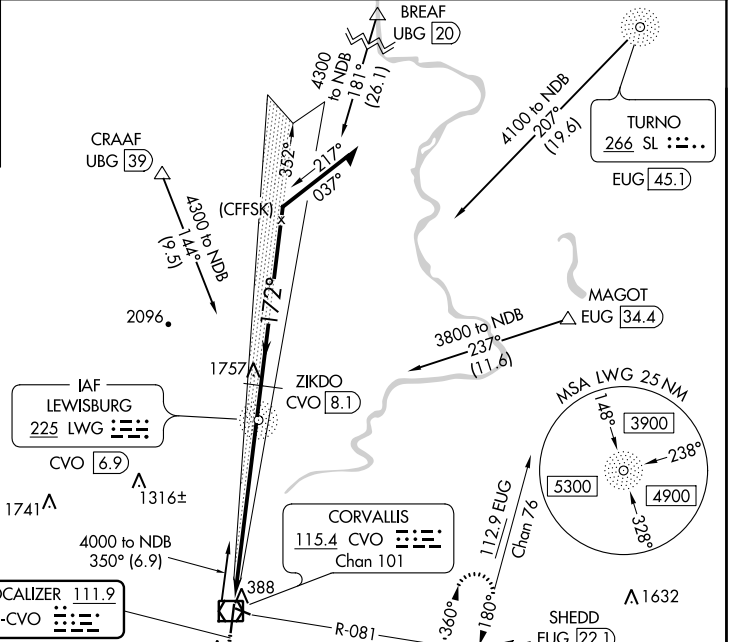
ADF required for procedure entry. ADF required for LOC only.

MALSR MISSED APPROACH: Climb to 900 then climbing left turn to 3000 on heading 050° and on CVO VOR/DME R-081 to SHEDD INT/EUG 22.1 DME and hold, continue climb-in-hold to 3000.

AWOS-3PT 135.775	CASCADE APP CON * 127.5 348.7	UNICOM 123.075 (CTAF) 0
----------------------------	---	-----------------------------------

ALTERNATE MISSED APCH FIX

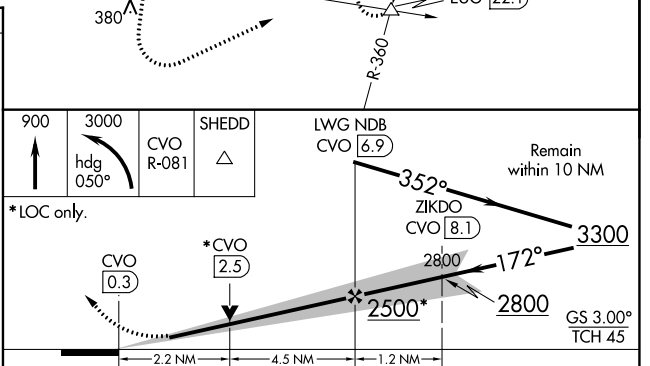
LEWISBURG LWG 225



ELEV 250 TDZE 248

172° 6.7 NM from FAF

Knots	60	90	120	150	180
Min:Sec	6:42	4:28	3:21	2:41	2:14



CATEGORY	A	B	C	D
S-ILS 17	448-½ 200 (200-½)			
S-LOC 17	1000-½ 752 (800-½)	1000-¾ 752 (800-¾)	1000-1¾ 752 (800-1¾)	752 (800-1¾)
C CIRCLING	1000-1 750 (800-1)	1000-1¼ 750 (800-1¼)	1000-2¼ 750 (800-2¼)	1080-2¾ 830 (900-2¾)

NW-1, 23 FEB 2023 to 23 MAR 2023

NW-1, 23 FEB 2023 to 23 MAR 2023