

MARYSVILLE, CALIFORNIA

RNAV (GPS) RWY 15

APCH CRS	Rwy Idg	12,001
145°	THRE	113
	Arpt Elev	113

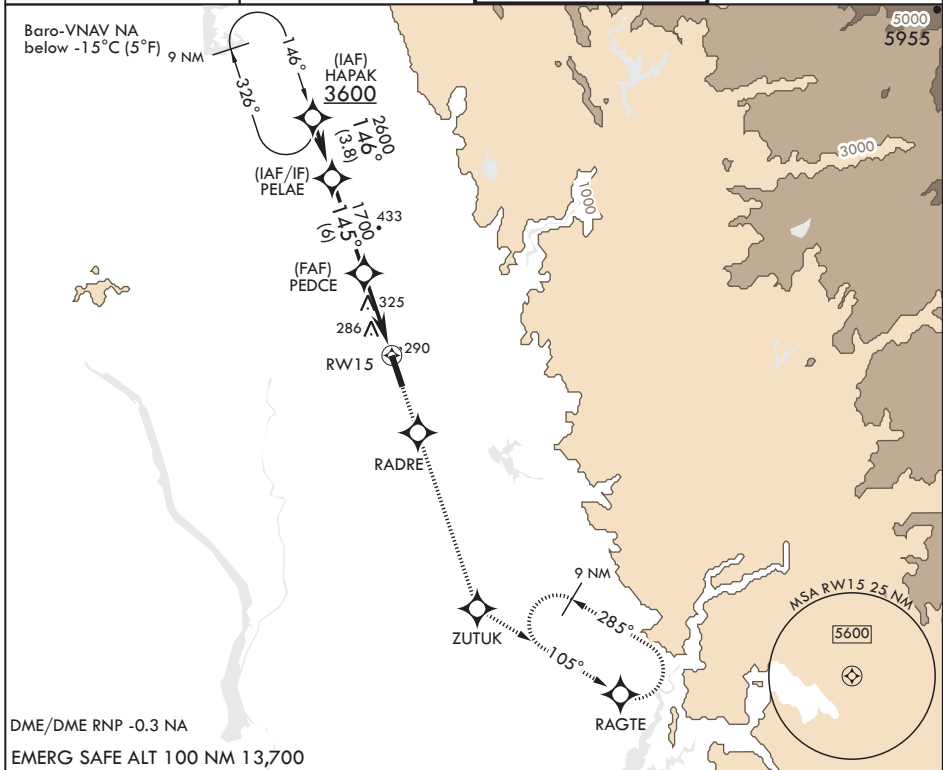
AL-771 (USAF)

BEALE AFB (KBAB)

⚠ * When ALS inop, increase vis to 2 1/2 miles.
 ** When ALS inop, increase CAT AB RVR to 55 and vis to 1 mile, CAT CDE vis to 1 3/8 miles.
 *** Circling not authorized E of Rwy 15-33.

ALSIF-1 MISSED APPROACH: Climb direct RADRE, then track 145° to ZUTUK, then turn left and track 105° to RAGTE and hold, maintain 3600.

ATIS★ 124.55 273.5	NORCAL APP CON 125.4 259.1	TOWER★ 119.4 284.75	GND CON 121.6 257.75
-----------------------	-------------------------------	------------------------	-------------------------



DME/DME RNP -0.3 NA

EMERG SAFE ALT 100 NM 13,700

PELAE	VGSI and descent angles not coincident.		3600	RADRE	tr 145°	ZUTUK	ELEV 113	THRE 113
2600	145°		1700	† LNAV only		† 1.6 NM to RW15	219	256
GP 2.75° TCH 47	5.2 NM			RW15			12001-300	BCN 240
							TWR 274	33
CATEGORY	A	B	C	D	E	HIRL all Rwys		
LNAV/VNAV DA*	680-1%		567	(600-1%)				
LNAV MDA**	620/24 507 (600-1/2)		620/55	507 (600-1)				
CIRCLING***	620-1 507 (600-1)	640-1 527 (600-1)	660-1 1/2 547 (600-1 1/2)	680-2 567 (600-2)	840-2 1/2 727 (800-2 1/2)			

MARYSVILLE, CALIFORNIA

39°08'N - 121°26'W

BEALE AFB (KBAB)

Amdt 1 20JUL17

RNAV (GPS) RWY 15

SW-2, 23 FEB 2023 to 23 MAR 2023

SW-2, 23 FEB 2023 to 23 MAR 2023