

# HI-TACAN Z RWY 33

TACAN BAB Chan 23	APCH CRS 317°	Rwy ldg 12,001
		TDZE 105
		Arprt Elev 113

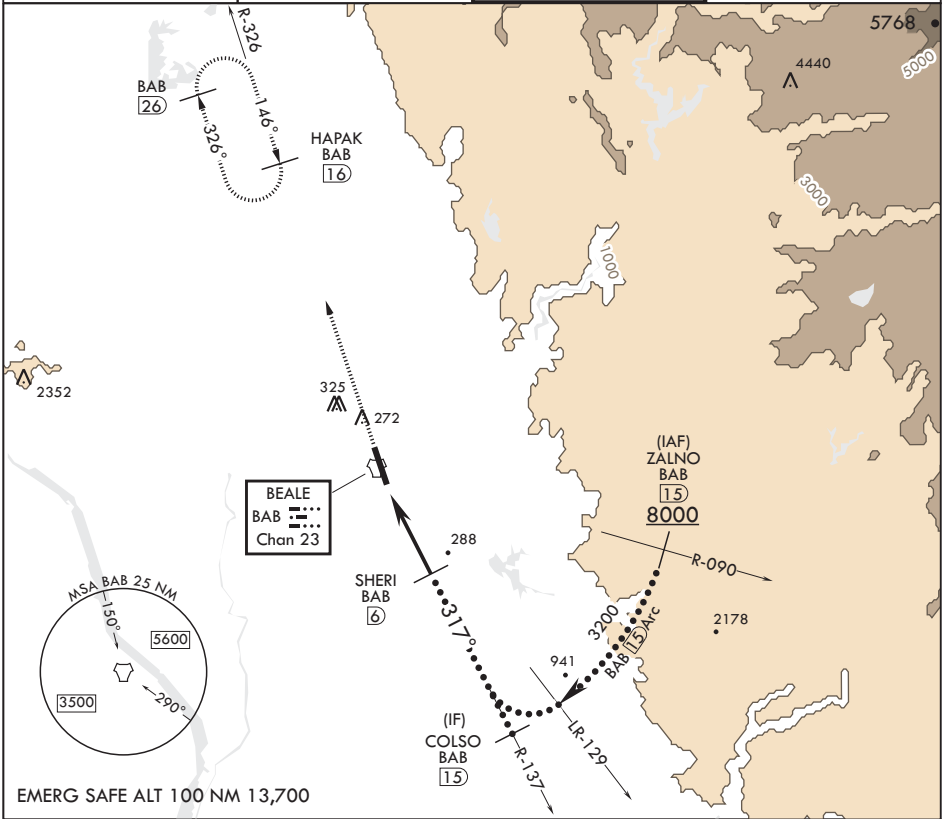
JAL-771 (USAF)

BEALE AFB (KBAB)

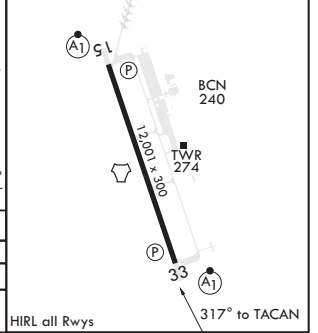
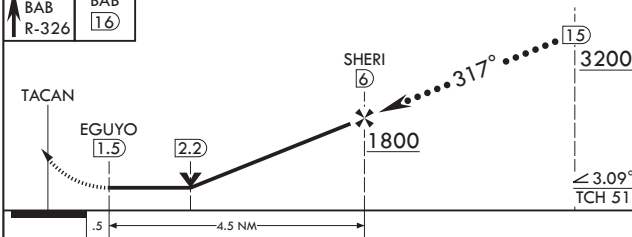
**V** \* When ALS inop, increase CAT CDE vis to 1 1/4 miles.  
 \*\* Circling not authorized E of Rwy 15-33

ALSF-1 MISSED APPROACH: Climb to 3600, intercept BAB TACAN R-326 to HAPAK and hold.

ATIS* 124.55 273.5	NORCAL APP CON 125.4 259.1	TOWER* 119.4 284.75	GND CON 121.6 257.75
-----------------------	-------------------------------	------------------------	-------------------------



3600 HAPAK BAB (16) ↑ R-326	COLSO R-137 ELEV 113	TDZE 105
--------------------------------	-------------------------	----------



CATEGORY	C	D	E
S-33*	540/40	435	(500-3/4)
<b>C</b> CIRCLING**	600-1 1/2 487 (500-1 1/2)	680-2 567 (600-2)	840-2 1/2 727 (800-2 1/2)

# HI-TACAN Z RWY 33

SW-2, 23 FEB 2023 to 23 MAR 2023

SW-2, 23 FEB 2023 to 23 MAR 2023