

# JOE POOL SIX DEPARTURE

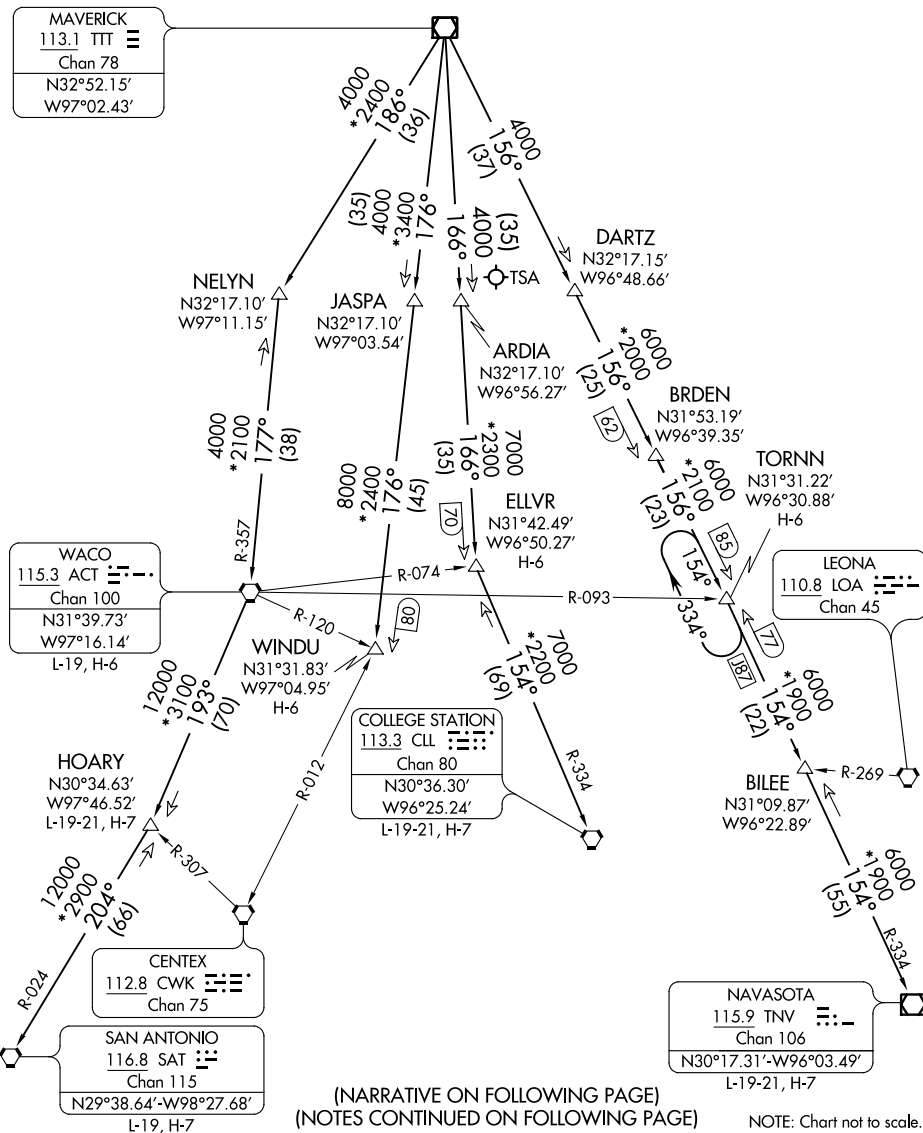
RADAR and DME required.

## TAKEOFF MINIMUMS

Rwy 34: Standard.

Rwy 16: 400-2½ or standard with minimum climb of 325' per NM to 1100.

ATIS 133.4  
 CLNC DEL 119.55  
 GND CON 121.6  
 ADDISON TOWER ★ 126.0 (CTAF) 239.0  
 REGIONAL DEP CON 124.3 282.275



(NARRATIVE ON FOLLOWING PAGE)  
(NOTES CONTINUED ON FOLLOWING PAGE)

NOTE: Chart not to scale.

# JOE POOL SIX DEPARTURE

SC-2, 23 FEB 2023 to 23 MAR 2023

SC-2, 23 FEB 2023 to 23 MAR 2023