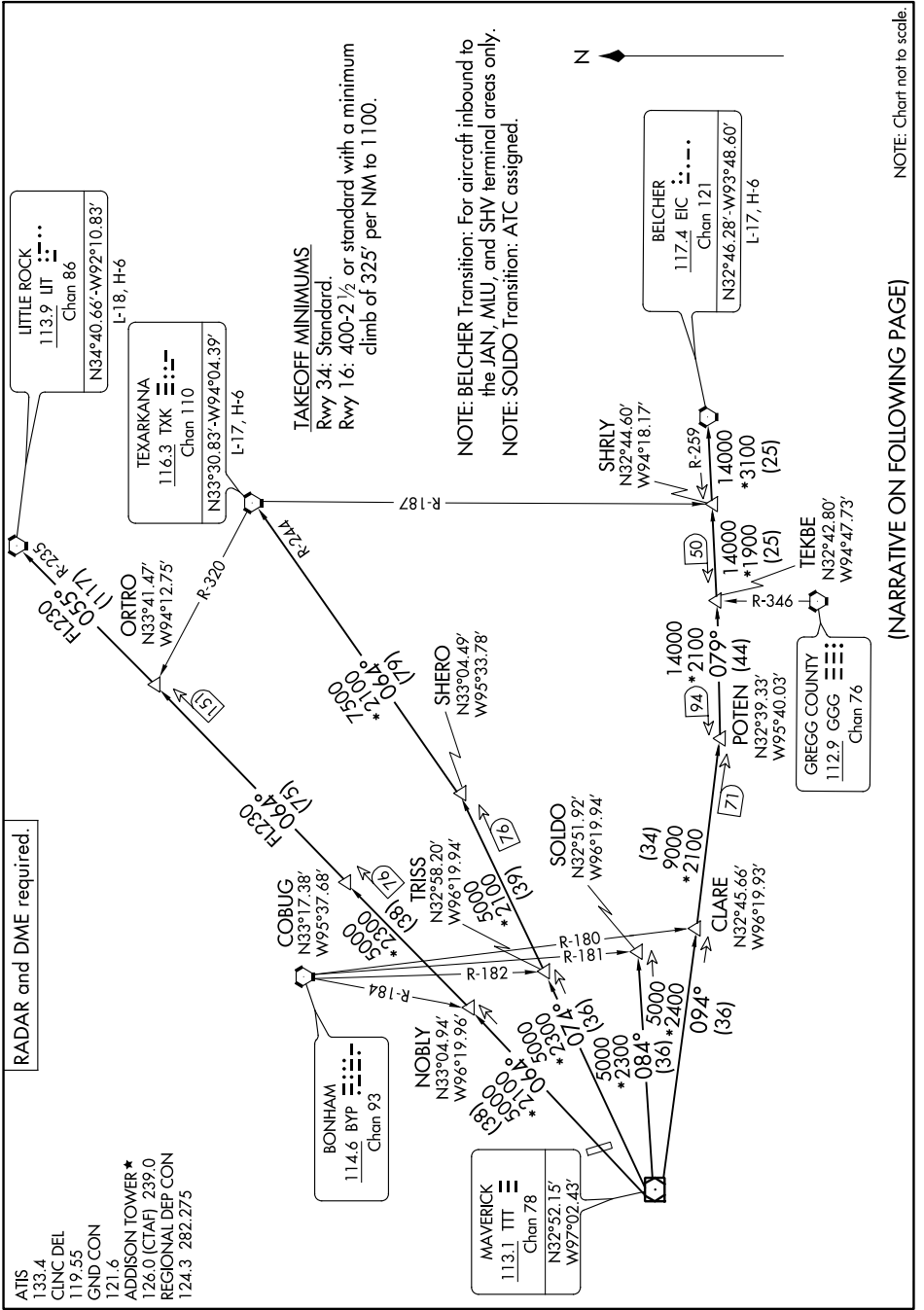


DALLAS TWO DEPARTURE

DALLAS, TEXAS

SC-2, 23 FEB 2023 to 23 MAR 2023



RADAR and DME required.

- ATIS 133.4
- CINC DEL 119.55
- GND CON 121.6
- ADDISON TOWER* 126.0 (CTAF) 239.0
- REGIONAL DEP CON 124.3 282.275

TAKEOFF MINIMUMS
 Rwy 34: Standard.
 Rwy 16: 400-2 1/2 or standard with a minimum climb of 325' per NM to 1100.

NOTE: BELCHER Transition: For aircraft inbound to the JAN, MIU, and SHV terminal areas only.
NOTE: SOLDI Transition: ATC assigned.

(NARRATIVE ON FOLLOWING PAGE)

NOTE: Chart not to scale.

DALLAS TWO DEPARTURE

DALLAS, TEXAS

SC-2, 23 FEB 2023 to 23 MAR 2023