

VORTAC VLA <b>114.3</b> Chan <b>90</b>	APP CRS <b>179°</b>	Rwy Idg <b>3751</b> TDZE <b>534</b> Apt Elev <b>537</b>
--	------------------------	---

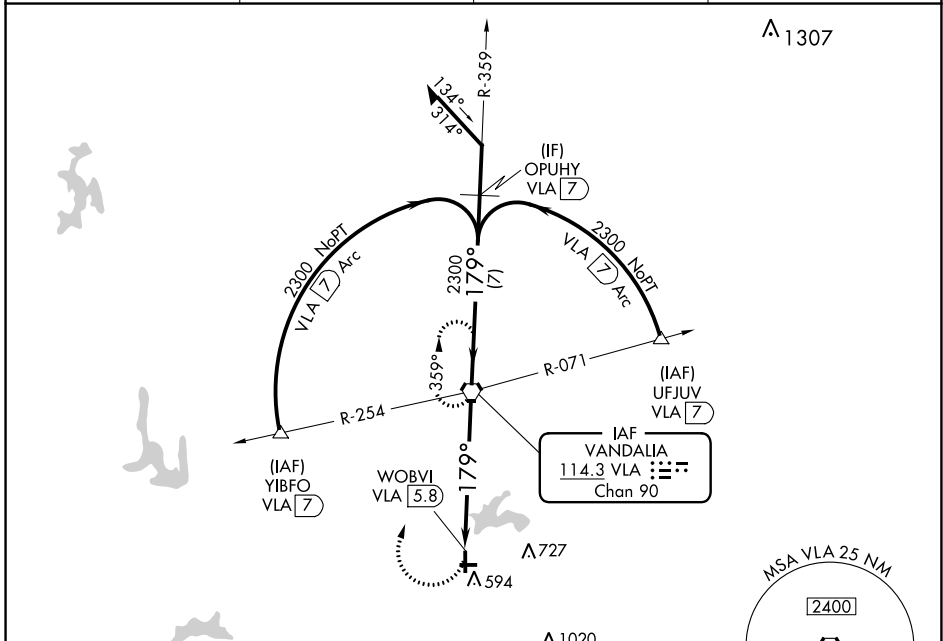
# VOR RWY 18

VANDALIA MUNI (VLA)

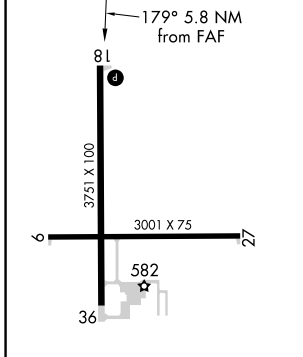
**▲** NA Use Salem altimeter setting, when not received use Centralia altimeter setting and increase all MDA 20 feet.  
Helicopter visibility reduction below 1 SM NA.

MISSED APPROACH: Climbing right turn to 2300 direct VLA VORTAC and hold.

AWOS-AV <b>122.8</b>	SLO AWOS-3 <b>118.525</b>	KANSAS CITY CENTER <b>124.3 269.15</b>	UNICOM <b>122.8 (CTAF) 0</b>
-------------------------	------------------------------	---	---------------------------------



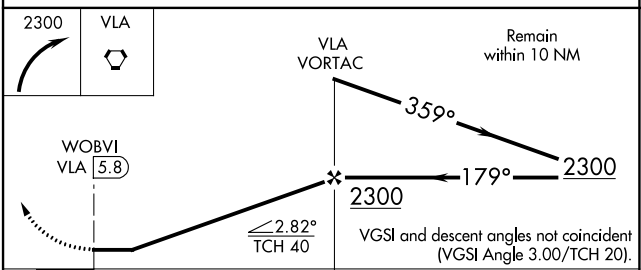
ELEV <b>537</b>	TDZE <b>534</b>
-----------------	-----------------



REIL Rwy 18, 27 and 36 **0**  
MIRL Rwy 9-27 and 18-36 **0**

FAF to MAP 5.8 NM

Knots	60	90	120	150	180
Min:Sec	5:48	3:52	2:54	2:19	1:56



CATEGORY	A	B	C	D
S-18	1140-1	606 (700-1)	1140-1 <sup>3</sup> / <sub>4</sub> 606 (700-1 <sup>3</sup> / <sub>4</sub> )	NA
<b>C</b> CIRCLING	1160-1	623 (700-1)	1160-1 <sup>3</sup> / <sub>4</sub> 623 (700-1 <sup>3</sup> / <sub>4</sub> )	NA