

APP CRS	Rwy Idg	<b>3751</b>
<b>001°</b>	TDZE	<b>534</b>
	Apt Elev	<b>537</b>

# RNAV (GPS) RWY 36

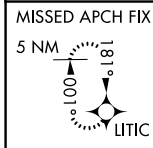
VANDALIA MUNI (VLA)

RNP APCH.

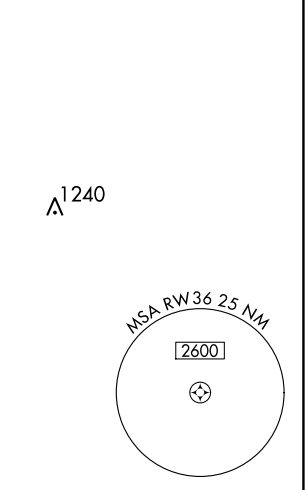
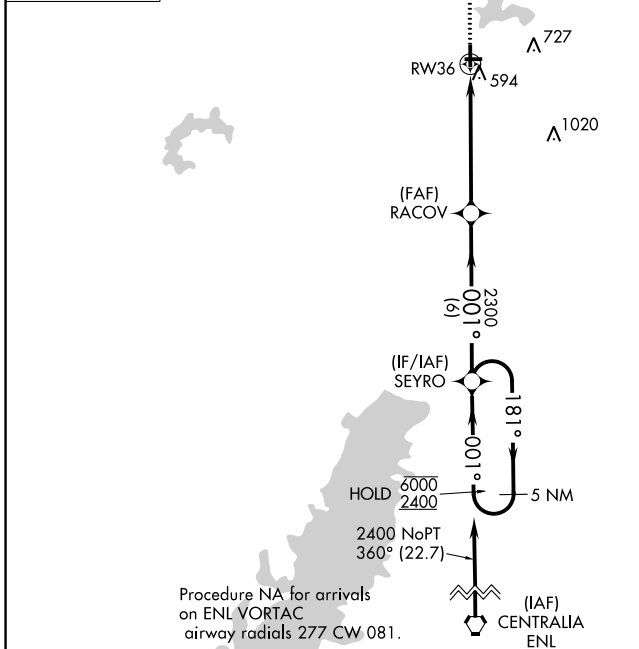
**⚠** Rwy 36 helicopter visibility reduction below ¾ SM NA. When local altimeter setting not received, use Salem altimeter setting; increase all MDAs 60 feet and visibility LNAV Cats C and D and Circling Cat D ¼ SM.

MISSED APPROACH: Climb to 2400 direct LITIC and hold.

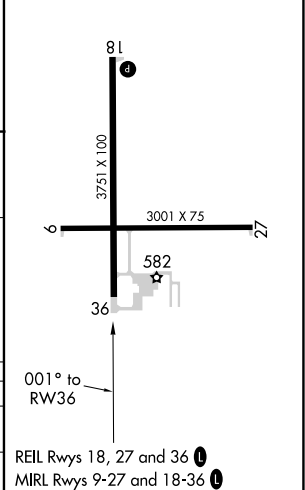
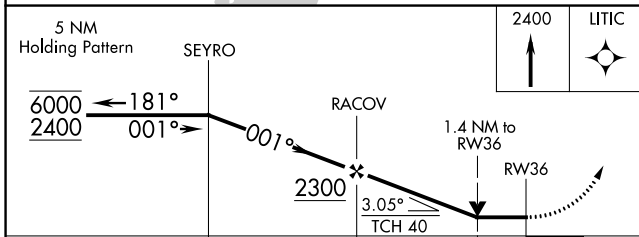
AWOS-AV <b>122.8</b>	SLO AWOS-3 <b>118.525</b>	KANSAS CITY CENTER <b>124.3 269.15</b>	UNICOM <b>122.8 (CTAF) 0</b>
-------------------------	------------------------------	---	---------------------------------



Procedure NA for arrivals on VLA VORTAC airway radials 158 CW 254.



ELEV 537	TDZE 534
----------	----------



CATEGORY	A	B	C	D
LNAV MDA	1020-1	486 (500-1)	1020-1 <sup>3</sup> / <sub>8</sub>	486 (500-1 <sup>3</sup> / <sub>8</sub> )
CIRCLING	1040-1	503 (600-1)	1060-1 <sup>1</sup> / <sub>2</sub> 523 (600-1 <sup>1</sup> / <sub>2</sub> )	1220-2 <sup>1</sup> / <sub>4</sub> 683 (700-2 <sup>1</sup> / <sub>4</sub> )

REIL Rwy 18, 27 and 36 **0**  
MIRL Rwy 9-27 and 18-36 **0**

EC-3, 23 FEB 2023 to 23 MAR 2023

EC-3, 23 FEB 2023 to 23 MAR 2023