

KUSSO ONE DEPARTURE (RNAV)

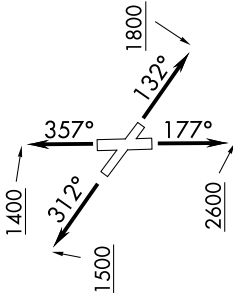
SC-2, 23 FEB 2023 to 23 MAR 2023

TOP ALTITUDE: ASSIGNED BY ATC

ATIS 126.35
 CLINC DEL 118.625
 GND CON 119.475
 EXECUTIVE TOWER * 127.25 (CTAF)
 REGIONAL DEP CON 125.2 343.65

TAKEOFF MINIMUMS

Rwy 13, 31, 35: Standard.
 Rwy 17: 400-2³/₄ or standard with a minimum climb of 220' per NM to 1200.

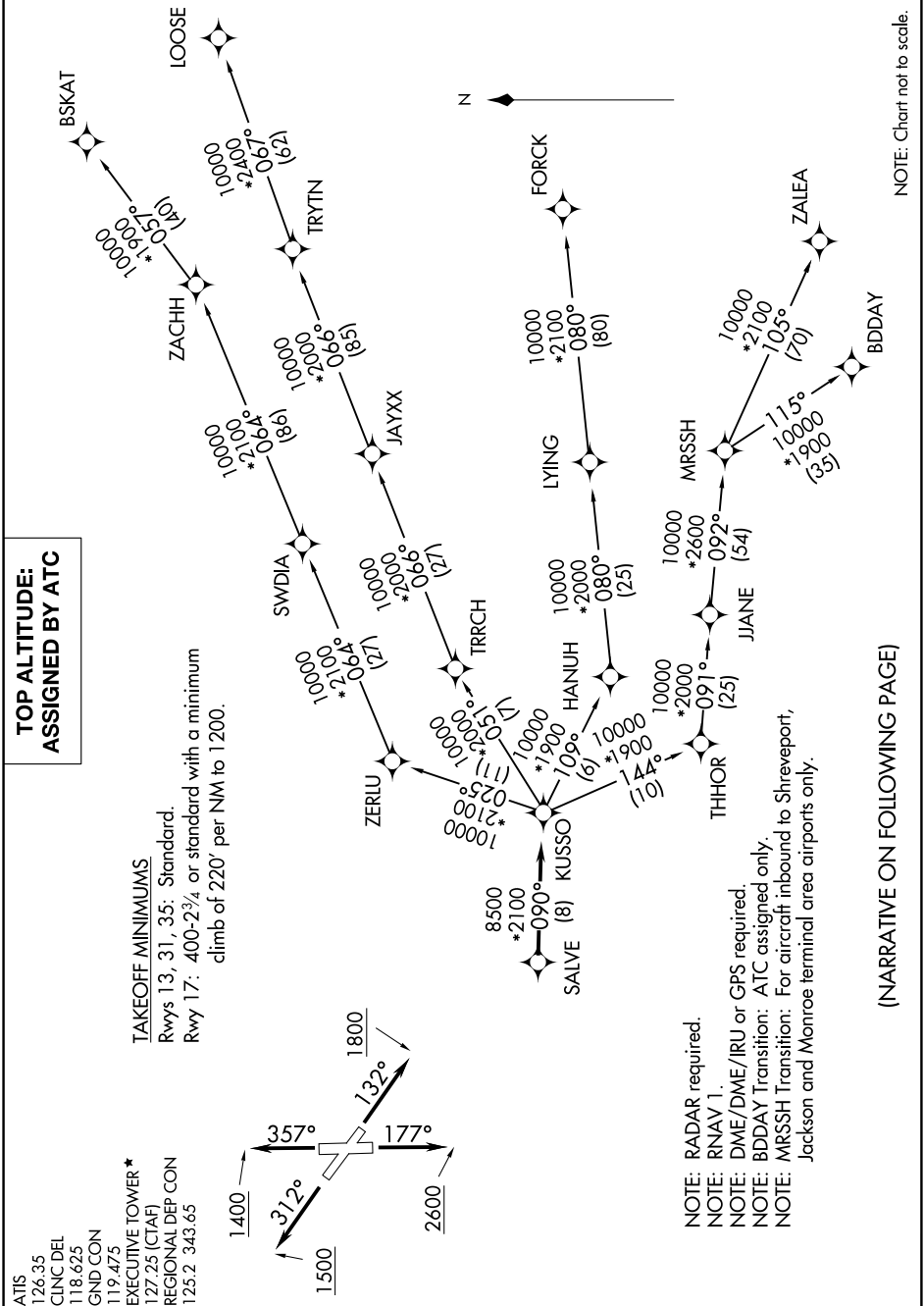


NOTE: Chart not to scale.

(NARRATIVE ON FOLLOWING PAGE)

SC-2, 23 FEB 2023 to 23 MAR 2023

KUSSO ONE DEPARTURE (RNAV)



NOTE: RADAR required.
 NOTE: RNAV 1.
 NOTE: DME/DME/IRU or GPS required.
 NOTE: BDDAY Transition: ATC assigned only.
 NOTE: MRSSH Transition: For aircraft inbound to Shreveport, Jackson and Monroe terminal area airports only.