

JOE POOL SIX DEPARTURE

RADAR and DME required.

ATIS
126.35
CLNC DEL
118.625
GND CON
119.475
EXECUTIVE TOWER *
127.25 (CTAF)
REGIONAL DEP CON
125.2 343.65

TAKEOFF MINIMUMS

Rwys 13, 31, 35: Standard.
Rwy 17: 400-2¾ or standard with minimum climb of 220' per NM to 1200.

MAVERICK
113.1 TTT
Chan 78
N32°52.15'
W97°02.43'

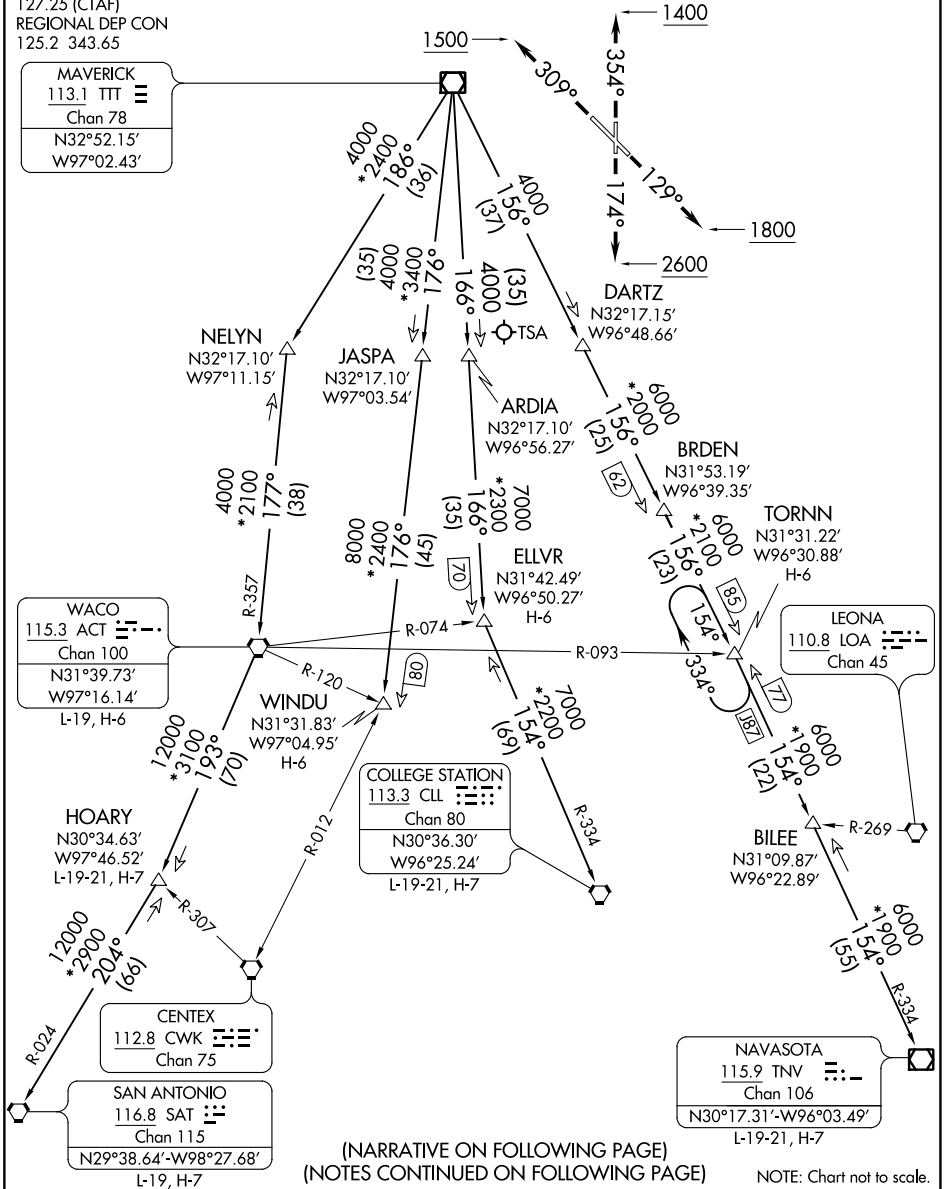
WACO
115.3 ACT
Chan 100
N31°39.73'
W97°16.14'
L-19, H-6

COLLEGE STATION
113.3 CLL
Chan 80
N30°36.30'
W96°25.24'
L-19-21, H-7

CENTEX
112.8 CWK
Chan 75

SAN ANTONIO
116.8 SAT
Chan 115
N29°38.64'-W98°27.68'
L-19, H-7

NAVASOTA
115.9 TNV
Chan 106
N30°17.31'-W96°03.49'
L-19-21, H-7



(NARRATIVE ON FOLLOWING PAGE)
(NOTES CONTINUED ON FOLLOWING PAGE)

NOTE: Chart not to scale.

SC-2, 23 FEB 2023 to 23 MAR 2023

SC-2, 23 FEB 2023 to 23 MAR 2023

JOE POOL SIX DEPARTURE