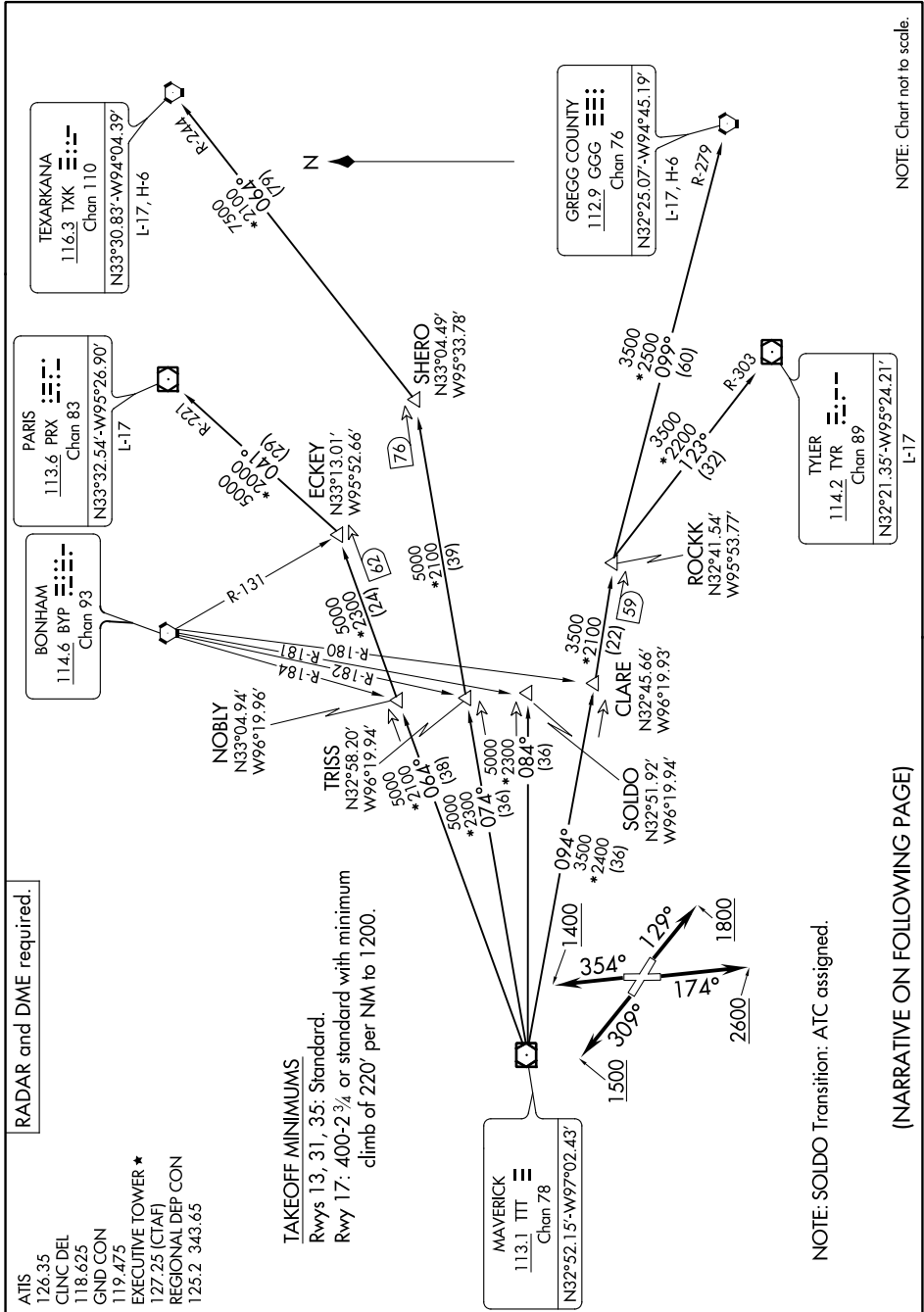


SC-2, 23 FEB 2023 to 23 MAR 2023



RADAR and DME required.

ATIS 126.35  
 CLNC DEL 118.625  
 GND CON 119.475  
 EXECUTIVE TOWER \* 127.25 (CTAF)  
 REGIONAL DEP CON 125.2 343.65

**TAKEOFF MINIMUMS**  
 Rwy's 13, 31, 35: Standard.  
 Rwy 17: 400-2 3/4 or standard with minimum  
 climb of 220' per NM to 1200.

NOTE: SOLDO Transition: ATC assigned.

(NARRATIVE ON FOLLOWING PAGE)

SC-2, 23 FEB 2023 to 23 MAR 2023