

FUNNL THREE DEPARTURE (RNAV)

SC-1, 23 FEB 2023 to 23 MAR 2023

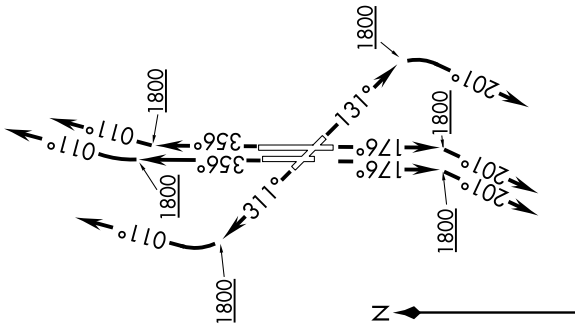
TOP ALTITUDE:
Assigned by ATC

ATIS
128.725
GND CON
121.7
WILEY POST TOWER *
126.9 306.9
OKE CITY DEP CON
124.6 266.8 (South)
124.2 336.4 (North)

TAKEOFF MINIMUMS:

Rwys 13, 17L/R, 31, 35L/R:

Standard with minimum climb of 500' per NM to 2100.



NOTE: RADAR required.
NOTE: DME/DME/IRU or GPS required.
NOTE: RNAV 1.

NOTE: Chart not to scale.

FUNNL THREE DEPARTURE (RNAV)

(FUNNL3.FUNNL) 07DEC17

OKLAHOMA CITY, OKLAHOMA
WILEY POST (PWA)

▼ DEPARTURE ROUTE DESCRIPTION

TAKEOFF RWY 13: Climb heading 131° to 1800, then right turn heading 201° or as assigned by ATC, expect RADAR vectors to VOWED. Thence. . . .

TAKEOFF RWYS 17L/R: Climb heading 176° to 1800, then right turn heading 201° or as assigned by ATC, expect RADAR vectors to VOWED. Thence. . . .

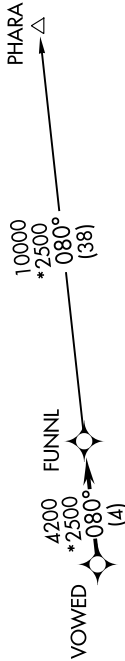
TAKEOFF RWY 31: Climb heading 311° to 1800, then right turn heading 011° or as assigned by ATC, expect RADAR vectors to VOWED. Thence. . . .

TAKEOFF RWY 35L: Climb heading 356° to 1800, then heading 011° or as assigned by ATC, expect RADAR vectors to VOWED. Thence. . . .

TAKEOFF RWY 35R: Climb heading 356° to 1800, then right turn heading 011° or as assigned by ATC, expect RADAR vectors to VOWED. Thence. . . .

. . . . on track 080° to FUNNL, then on (transition). Maintain 3000 or as assigned by ATC. Expect filed altitude 10 minutes after departure.

PHARA TRANSITION (FUNNL3.PHARA):



SC-1, 23 FEB 2023 to 23 MAR 2023